

AMPROBE®



Complete Product Catalog

2019-2020 Vol. #1



**Tested by
Fluke Labs**
Safety certified by  
More than 500 products worldwide
Ordered and supported through Fluke

Underground Cable Locators

UAT-600 Series	Underground Utilities Locator Kits	6
AF-600 A-Frame	Ground Fault Locator (Accessory for UAT-600)	7
AT-3500	Underground Cable Locator	8

Wire Tracers

AT-6000 Series	Advanced Wire Tracer Kits	9
AT-7000 Series	Advanced Wire Tracer Kits	10
AT-1000	Wire Tracer	11
CT-326-C	Current Tracer	11
CT-100	Current Tracer	11
BT-250	Circuit Breaker Tester	11

Clamp Meters

AMP-200, AMP-300 Series	TRMS and Motor Maintenance Clamp Meters	14
Navigator™ Series	Power Quality Clamp Meters	15
AMP-25	AC/DC TRMS Mini-Clamp	16
ACD-20SW, ACD-23SW	Swivel™ Series Clamp Meters	16
ACD-14-PRO	Dual Display TRMS Clamp Meter	17
ACD-10 PLUS, ACD-14 PLUS	Thin Jaw/Dual Display Clamp Multimeters	18
ACDC-3400 IND	Industrial Clamp Meter	18
ALC-110	Leakage Current Clamp	19
RS-1007 PRO	CAT IV Analog Clamp Meter	19
AC50A	Leakage Current Clamp Multimeter	19
LH41A	AC/DC Low Current Clamp Meter	19
ACD-6 PRO	Digital Clamp Meter	20
ELS2A	AC Line Splitter	20/62

Multimeters

AM-500 Series	Digital Multimeters	23
XR Series	Digital Multimeters	24
HD110C IP67	Heavy Duty Multimeter	25
HD160C IP67	Heavy Duty True-rms Multimeter	25
AM-500	Autoranging Multimeter	26
DM73C	Multimeter with Built-in Test Probe	26
PM51A, PM55A	PM Series Pocket Multimeters	26

Power Quality - Insulation - Ground Resistance

DM-5	Power Quality Analyzer	28
AMB-45	Digital Insulation Tester	30
AMB-25	Digital Insulation Resistance Tester	30
AMB-50, AMB-55, AMB-110	Industrial High Voltage Insulation Testers	31
GP-2A	Ground Resistance & Resistivity Tester	32
DGC-1000A	Clamp-on Ground Resistance Tester	32

Electrical Testers

INSP-3	Wiring Inspector Circuit Tester	34
ST-101B, ST-102B	Receptacle Testers	34
TIC 300 PRO, TIC 410A	High Voltage Detector	35
MO-100	Milliohm Meter	36
PK-110	Electrical Test Kit	36
PRM-6	Phase Sequence/Motor Rotation Tester	37
VP-1000SB	Non-contact Volt Probe	37
VP-440	Non-contact Volt Probe	37
PY-1A	Voltage Tester	38
LAN-1	LAN Tester	38
NCV Series	Non-Contact Voltage Probe Series	39
VPC-10A, VPC-12	Voltage And Continuity Testers	39

Temperature

IRC-120, IRC-110	Thermal Cameras	41
IR-700 Series	Infrared Thermometers	42
IR-450	Infrared Pocket Thermometer	43
IR608A	Infrared Thermometer	43
THWD-3, TH-3	Relative Humidity and Temperature Meters	44
TH-1	Compact Probe Style Relative Humidity Meter	44
THWD-5	Relative Humidity Temperature Meter	44
TMD-56	Multi-logging Digital Thermometer	45
TR200-A, TR300	Temperature/Relative Humidity Data Loggers	45

Environmental Testers and Leak Detectors

LM-100, LM-120	Light Meters	47
LM-200LED	LED Light Meter	47
SM-10, SM-20-A	Sound Meters	47
SM-CAL1	Sound Meter Calibrator	48
MT-10	Moisture Meter	48
TACH10, TACH20	Combo Tachometers	48
TH-1	Relative Humidity/Temperature Probe Meter	48
CO2-100, CO2-200	Handheld Carbon Dioxide Testers	49
CM100	Carbon Monoxide Meter	49
TMA5	Mini Vane Anemometer	50
TMA-20HW, TMA-21HW	Hotwire Anemometers	50
TMA40-A	Datalogging Anemometer	51
TMA10A	Anemometer with Flexible Precision Vane	51
RLD-1	Refrigerant Leak Detector	52
GSD600	Gas Leak Detector	52
ULD-300, TMULD-300	Ultrasonic Leak Detectors	53

Adapters, Relay Switches

Light Adapter Series	Light Adapters	55
ADPTR-KIT1	Light Adapter Kit	55
ADPTR-SCT	Socket Adapter	55
R-1155, RC-1205	Remcon Relay Switches	56

Solar Testers, Component Testers, Battery Testers

SOLAR-100	Solar Power Meter	56
CR50A	Capacitance Tester	57
LCR55A	Inductance/Capacitance/Resistance Tester	57
BAT-250	Battery Tester	57
BAT-500	Battery Tester	58

Recommended and Replacement Accessories

Ground Fault Locator	7/60
Signal Clamps	60
Pipe Transmitter	60
Current Sensors	60
Extendable Hot Stick	60
Test Leads	61
Thermocouples	61
Replacement Sensor	61
Ultrasonic Transmitter and Adapter Kit	61
AC Current Line Splitter	20/62
Current Clamps	62
Carrying Cases/Hanging Strap	62
Carrying Case Directory	63
Fuse Directory	64
Software	Download Suite 64
Complete Product Index	Over 200 products and accessories 65-67



No Hassle Warranty
No waiting, no shipping charges

Amprobe is committed to delivering the highest quality test and measurement products and provides a 1 year warranty with most products. The length of the product warranty is stated in the user manual that comes with each product, which can be downloaded from amprobe.com.

To better serve you, in the unlikely event that an Amprobe product requires warranty service, Amprobe authorizes over-the-counter product exchange from the authorized Amprobe distributor for which the product was purchased, within 30 days from the date of purchase for products with a list price up to \$500. For products with a list price greater than \$500 or for issues encountered after the first 30 days but within the warranty period, please contact the Amprobe Service Department at 1-877-AMPROBE for warranty services.

Safety Certification



All Amprobe tools are rigorously tested for safety, accuracy, reliability, and ruggedness in our state-of-the-art test lab. In addition, Amprobe products that measure electricity are listed by a 3rd party safety lab, either UL or CSA. This system assures that Amprobe products meet or exceed safety regulations and will perform in a tough, professional environment for many years to come.

Amprobe's Newest Products!



UAT-620 Underground
Utilities Locator

Electrical Safety
CAT IV
600 V

CS US CE UK



AF-600 A-Frame
Ground Fault Locator
accessory

CS US CE UK



AT-6020 and **AT-6030**
Advanced Wire Tracer Kits

Electrical Safety
CAT III
600 V

CS US CE UK



AT-6010 Advanced
Wire Tracer Kit

Electrical Safety
CAT III
600 V

CS US CE UK



ALC-110
Leakage
Current Clamp

Electrical Safety
CAT III
600 V

CS US CE UK



IRC-120
Thermal Camera
with SD card



..... **Large LCD Display**
with auto backlight
for clear viewing in
full sunlight

Locate
underground
utilities up to
100 ft.>



..... **Intuitive
Transmitter**
automatically
chooses the
correct locating
function

Underground Locators and Wire Tracers

TECHNOLOGY - When you want to be sure you're digging in the right place, depend on the technology leader. No other systems even come close to the speed, reliability and accuracy of Amprobe Underground Cable and Pipe Locators. Amprobe invented Wire Tracer technology and continues to lead the industry today.

Wire Tracer and Underground locator selection guides

Known for speed, reliability, and accuracy, Amprobe wire tracers and Underground Locator kits set the standard for precision and usability, and help you get the job done quickly and accurately.

Wire Tracers

	<i>AT-6010</i>	<i>AT-6020</i>	<i>AT-6030</i>	<i>AT-7020</i>	<i>AT-7030</i>	<i>CT-100</i>	<i>AT-1000</i>	<i>CT-326-C</i>
	Pg 9	Pg 9	Pg 9	Pg 10	Pg 10	Pg 11	Pg 11	Pg 11
Measurement Category	CAT III 600 V	CAT III 600 V	CAT III 600 V	CAT IV 300 V	CAT IV 300 V	CAT III 600 V	-	-
Traces energized and de-energized wires	•	•	•	•	•	•	•	•
Locates energized and de-energized breakers and fuses	•	•	•	•	•	•	•	•
Receiver "Breaker Identification" mode to instantly identify the correct breaker	-	•	•	•	•	-	-	-
Finds shorts and opens	•	•	•	•	•	•	•	•
Transmitter "Loop" mode for closed loop de-energized circuits	-	•	•	•	•	-	-	-
Non-contact voltage detection	-	•	•	•	•	-	-	-
Two frequency modes for optimal tracing in energized (6 kHz) and de-energized (33 kHz) circuits	•	•	•	•	•	Fixed at 6.25 kHz	Fixed at 17 kHz	Fixed at 6.25 kHz
Transmitter Operating Voltage	0 to 600 V AC/DC	0 to 600 V AC/DC	0 to 600 V AC/DC	9 to 300 V AC/DC	9 to 300 V AC/DC	9 to 300 V AC/DC	0 to 300 V AC/DC	6 to 300 V AC/DC
Receiver Display	B&W 2.5 in LCD	Color 2.5" LCD	Color 2.5" LCD	Color 3.5" LCD	Color 3.5" LCD	LEDs (no screen)	LEDs (no screen)	LEDs (no screen)
Rechargeable Batteries	-	-	•	-	•	-	-	-
Signal clamp attachment to induce signal	(optional accessory)	(optional accessory)	•	(optional accessory)	•	-	-	-
Includes battery booster to strengthen signal for open tracing	-	-	-	-	-	-	-	-

Underground Locators

	<i>UT-3500</i>	<i>UT-610</i>	<i>UT-620</i>
	Pg 8	Pg 6	Pg 6
Measurement Category	-	CAT IV 600 V	CAT IV 600 V
Locates energized/de-energized wires, cables, pipes	•	•	•
Passive tracing - 50/60 Hz	•	•	•
Passive tracing - Radio	•	•	•
Active Tracing	33 kHz	33 kHz (de-energized) 8kHz (energized system)	33 kHz (de-energized) 8kHz (energized system)
Active tracing - Induction mode (33kHz)	•	•	•
Depth measurement	Up to 16 ft (4.9 m)	Up to 20 ft (6 m)	Up to 20 ft (6 m)
Signal Clamp accessory	(optional accessory)	(optional accessory)	•
A-Frame accessory	(optional accessory)	(optional accessory)	(optional accessory)
Null and peak tracing options	-	•	•
Display	LCD	LCD	LCD
Sonde capable	•	•	•
Auto display backlight sensing (Receiver)	-	•	•

UAT-600 Series **Underground Utilities Locator**

Accidentally hitting a utility line during a project can lead to costly repairs and create hazardous public safety situations. Digging in the wrong place can also lead to unnecessary delays and costs for your project, and ultimately, your company. Avoid this disruption with the rugged and durable Amprobe UAT-600 Series, designed to accurately pinpoint underground utilities and buried services.

UAT-600-R Receiver



- **Rated CAT IV 600 V**, ensuring safety when working with energized cables
- **Multiple tracing modes** allow you to locate and trace energized and de-energized utilities in a variety of applications
- **The intuitive Transmitter** automatically chooses the correct locating function based on the connected accessory and includes selectable 8/33 kHz frequencies
- **The Receiver's high-contrast display** allows for clear viewing in full sunlight and features an automatic backlight for shaded and dark areas
- **Semi-automatic gain control** quickly detects tracing signal and allows precise adjustment of the receiver sensitivity
- **Locate buried utilities up to 100 feet deep, with accurate depth measurement to 20 ft**
- **Rugged, durable construction:** water and dust resistant to IP54 and drop proof to 3.28 ft (1 m)
- **Use the Signal Clamp** to induce a signal without making electrical contact (included with UAT-620)
- **Ground fault locating with the optional A-Frame accessory**
- **Comes as a complete kit, ready for use**

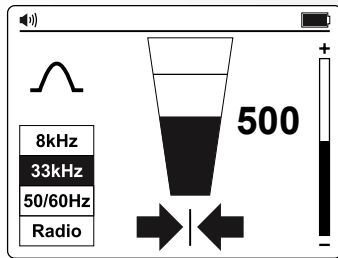
UAT-600-T Transmitter



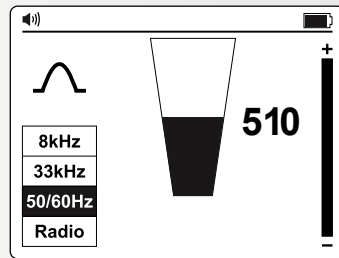
UAT-610
Order No. 4994380



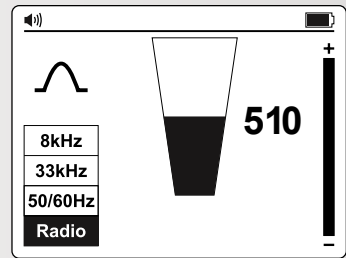
UAT-620
Order No. 4994398



In an **Active Mode** using the Transmitter, arrow indicators help quickly assess the location of the utility



Passively locate Energized cables and power lines with **Power Mode**



Passively locate any utility, Energized or De-energized, with **Radio Mode**

	UAT-600
Overvoltage category	CAT IV 600 V
Transmitter output voltage	Max. 50 V rms
Transmitter output current	Max. 250 mA rms, constant current in 5 steps
Transmitter output/ mains hazardous voltage warning	≥ 30 V rms
Transmitter tracing modes	<p>Energized circuit</p> <p>Induction mode: 33 kHz (32,768 Hz)</p> <p>Direct connection modes: 8 kHz (8,192 Hz) and 33 kHz (32,768 Hz)</p> <p>Clamp mode: 8 kHz (8,192Hz)/33 kHz (32,768Hz)</p> <p>De-Energized circuit</p> <p>Induction mode: 33 kHz (32,768 Hz)</p> <p>Direct connection modes: 8 kHz (8,192 Hz), 33 kHz (32,768 Hz), A-Lo/A-Hi</p> <p>A-Frame: 8 kHz (8,192 Hz)</p> <p>Clamp mode: 8 kHz (8,192Hz)/33 kHz (32,768Hz)</p>
Receiver tracing modes	<p>Active tracing: 33 kHz (32,768 Hz) and 8 kHz (8,192 Hz)</p> <p>Passive tracing: 50/60 Hz and Radio*</p>
Receiver depth measurement and accuracy	<p>Up to 20 ft (6 m)</p> <p>4 in (0.1 m) to 10 ft (3m): ± 3 %</p> <p>10 ft (3 m) to 20 ft (6 m): ± 5 %</p>
Receiver display	4.3 in, 320 x 240 BW outdoor LCD display with auto backlight
Transmitter display	2.4 in x 1.3 in LCD display with LED backlight



UAT-600 Series Kit contents

	UAT-610	UAT-620
UAT-600-R Receiver	1	1
UAT-600-T Transmitter	1	1
CC-UAT-600 Carrying Case	1	1
TL-UAT-600 Test Leads Kit*	1	1
FP-UAT-600 Replacement Fuse	2	2
User Manual	1	1
Quick Reference Guide	1	1
1.5 V AA (IEC LR6) Batteries (Receiver)	6	6
D-Cell Batteries (Transmitter)	8	8
SC-600 Signal Clamp	-	1

***TL-UAT-600 Test Leads Kit includes:** Black test lead with detachable black alligator clip, red test lead with permanently attached red alligator clip, ground stake



SC-600 Signal Clamp
Order No. 4994479



TL-UAT-600 Test Lead Kit
Order No. 4994446

See pg. 60-64 for details about accessories.



Trace an individual utility by connecting the transmitter directly with the test leads



The Transmitter will automatically change modes based on which accessory is plugged in



The Receiver's high contrast LED screen is easy to read in full sunlight

Accurately and Safely Pinpoint Underground Utilities Before You Dig

Main applications

- **Locate** energized 50/60 Hz cables carrying current
- **Identify the location of all metallic utilities:** pipes*, energized and de-energized cables
- **Trace** individual pipes* or cables (energized or de-energized)
*Tracing of non-metallic pipes and conduits is possible after inserting metal fish tape or cable

Two passive modes using only the UAT-600-R Receiver

- **Passive power mode** (50/60 Hz) – tracing energized lines conducting current (no Transmitter necessary)
- **Passive radio mode** (RF) – using surrounding radio waves to trace underground utilities (no Transmitter necessary)

Three active modes using the UAT-600-T Transmitter

- **Induction** - the Transmitter will automatically start to radiate a signal around it using an internal antenna, used for tracing individual cables where there is no access to the line to connect test leads or a clamp
- **Direct connection with test leads** - the most reliable method to trace individual cable or a pipe
- **Clamp** (Included in the UAT-620 kit, optional for the UAT-610 kit) - provides an efficient and safe method of applying a locate signal to a cable, where it is not possible/safe to gain access to a cable for making an electrical contact

Special applications

- **2 frequency options:** 8 kHz and 33 kHz
- **Locate** non-metallic pipes and sewer lines
- **Take depth** and current measurements
- **Measure** voltage, resistance and output current
- **Advanced locating with two people**
- **Locate** ground faults with the AF-600 A-Frame accessory

Replacement and Optional Accessories

AF-600 A-Frame Ground Fault Locator

(not included in the UAT-600 Kits)

Ground faults are a common problem with electrical cables. Find any fault with the AF-600 A-Frame cable ground fault locator, specifically designed for use with the Amprobe UAT-600 Series.



LCD Display with auto backlight

Detect ground faults on cables and pipes

Accessories

	Description
AF-600*	A-Frame ground fault locator to pinpoint ground faults where current is leaking to ground
BR-600-R	Rechargeable battery for Receiver
BR-600-T	Rechargeable battery for Transmitter
EPS-UAT-600	2-port charger for Receiver and Transmitter batteries
TL-600-25M	Extension test lead, 80' (25 m)

*AF-600 A-Frame includes: A-Frame Receiver, batteries, carrying case, user manual

See pg. 60-64 for details about accessories.

AF-600 A-Frame
Ground Fault Locator
Order No. 4994405



AT-3500 Underground Cable/Pipe Locator System

Keep productivity high and operational costs low with the AT-3500. This rugged, economical solution helps locate underground energized and de-energized wires, cables and pipes. Great for parking lot and airport lighting applications, it precisely pinpoints buried services with exceptionally fast sound and meter response.

Best Seller



AT-3500
Order No. 3435058

- Precisely pinpoint buried cables and wires
- Three testing modes for best accuracy:
 - Passive power (50 Hz/60 Hz)
 - Passive radio (RF)
 - Active T-3500 signal generator with induction mode directly connected to the cable with test leads or optional clamp
- Proven 33 kHz frequency for most locating applications
- Avoid lines at utility construction sites with highly sensitive power and radio modes
- Take depth measurements up to 16' (4.9 m)
- Backlit multiple-segment digital display with audible alerts to show and tell location of buried cables
- Semi-automatic gain control for fast signal location and control

	AT-3500
Depth Measurement	16 ft (4.9 m)
Passive Tracing Frequencies	50 Hz/60 Hz
Transmitter Frequency	Single, nonadjustable
Receiver Active Frequencies (Hz)	32.768 kHz
Receiver Passive Frequencies (Hz)	Range 1: radio 15 kHz to 23 kHz Range 2: power network 50 Hz/60 Hz; optionally 100 Hz (can be adjusted by Amprobe service personnel)
Receiver Depth Display Accuracy	Range 1: radio ± 20% Range 2: power network ± 20% Range 3: transmitter ± 5% (>5 m (6 ft), ± 20% (<5 m (15 ft))
Receiver Depth Range	Maximum 16 ft (4.9 m)

INCLUDED: Receiver, transmitter, connection cables, ground stake, carrying case, user manual, batteries (installed)

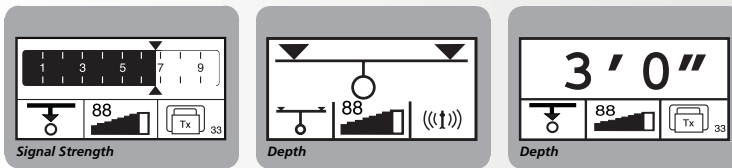


★★★★★
Top Rated

"It has saved me countless hours."

"I use this tracer when I investigate problems with light poles in several HOAs in the area. I am very happy with the performance of this tool. It allows me to quickly attach to the light pole and tracer out where panels are located and the directions of where the circuits are going."

- AT-3500 customer reviews



Recommended Accessories

See pg. 60-64 for details about accessories.



SC-3500 Signal Clamp
Order No. 3435073

MLS55-3 Pipe Transmitter
Order No. 3435099

Identify Underground Cables, Pipes & Wires

The Amprobe AT-3500 discovers the location of underground pipes, cables, and wires. Its innovative design allows the AT-3500 to measure depths up to or exceeding 16 feet. The transmitter operates at a 33 kilohertz (kHz) frequency signal, which provides the most reliable results for most locating applications. The Amprobe AT-3500 also comes with a connection cable and alligator clip for connecting the transmitter to the buried pipe, cable, or wire to be traced.

Expert Features for Any Situation

The AT-3500 can be used in different modes for optimal tracing in any situation.

Passive power mode locates energized wires with a 50/60 Hz frequency and does not require a transmitter. The receiver alone detects electromagnetic fields emitted by buried energized lines conducting currents.

Passive radio mode does not require a transmitter and uses the receiver to detect radio waves coming from cellular towers, radio stations, etc. that are picked up and carried by underground metal objects, such as cables or pipes.

Inductive active mode uses the transmitter to wirelessly induce a signal into a buried pipe, cable, or wire. The receiver then detects the signal carried by the buried utility, which enables tracing.

In active direction connection mode, the transmitter is connected to the buried utility with test leads (provided there is an available access point to the utility). The transmitter then sends a signal across the wire or pipe, which enables tracing.

The AT-3500 can trace non-metallic pipes that do not conduct a tracing signal. Some of these pipes have embedded metal trace that will conduct signal for tracing. In active inductive or direct connection modes, the AT-3500 can also be used to trace other-nonmetallic pipes by using existing metal wires inside the pipe or inserting metal fish tape into the pipe.



AT-6000 Series Advanced Wire Tracer Kits

The AT-6000 series, available in three different kits, combines a receiver and powerful transmitter to locate energized and de-energized wires, breakers, and fuses. Whether you're a novice or an expert, the Amprobe advanced wire tracer kits will help you get the job done accurately, safely, and quickly.

AT-6010 Advanced Wire Tracer Kit, designed for residential and commercial applications.

AT-6020, AT-6030 Advanced Wire Tracer Kits, designed for high-end commercial and industrial applications.

Four Tracing Modes AT-6020, AT-6030 only:

- Quick Scan Wire Tracing** allows for quick wire detection at a longer distance
- Precision Wire Tracing** precisely pinpoints wires or faults located behind walls, floors, or ceilings
- Breaker Identification** is an automatic sensitivity feature that allows for quick and easy breaker locating without the guesswork
- Non-Contact Voltage Detection** utilizes passive tracing without the transmitter to verify if a wire is Energized



AT-6000-R Receiver,
AT-6000-T Transmitter
CT-400 Signal Clamp



Hot Stick Attachment Adapter
Included with AT-6020 and
AT-6030 kits. Available as an
accessory for the AT-6010 kit.



AT-6010-R Receiver
AT-6010-T Transmitter

	AT-6010-R Receiver	AT-6000-R Receiver	AT-6010-T Transmitter	AT-6000-T Transmitter	CT-400 Signal Clamp
Measurement category	CAT III 600 V	CAT III 600 V	CAT III 600 V	CAT III 600 V	CAT IV 600 V, CAT III 1000 V
Operating voltage	0 to 600 V AC/DC	0 to 600 V AC/DC	0 to 600 V AC/DC	0 to 600 V AC/DC	0 to 1000 V AC
Operating frequency	Energized: 6.25 kHz De-Energized: 32.768 kHz		Energized: 6.25 kHz De-Energized: 32.768 kHz		Wire tracing: 32.768 kHz AC current measurement: 45 Hz to 400 Hz
Hazardous voltage detection	-	•	> 30 V AC/DC		-
Response time	Tip Sensor (energized/de-energized): 500 ms Battery voltage monitoring: 5 sec	Tip Sensor (energized/de-energized): 500 ms, NCV: 500 ms Battery voltage monitoring: 5 sec	Line voltage monitoring: 1 sec Battery voltage monitoring: 5 sec		Instantaneous
Current output of signal (typical)	-	-	Energized circuit: HI mode: 60 mA RMS De-energized circuit: HI mode: 130 mA RMS Loop mode: 160 mA RMS	Energized circuit: HI mode: 60 mA RMS LO mode: 30 mA RMS De-energized circuit: HI mode: 130 mA RMS LO mode: 40 mA RMS Loop mode: 160 mA RMS	1 mA/A for AC current measurement with multimeter
Signal voltage output (nominal)	-	-	De-energized circuit: HIGH: 33V RMS, 140 Vp-p With CT-400: loop model: 31 V RMS, 120 Vp-p	De-energized circuit: LOW: 29 V RMS, 120 Vp-p HIGH: 33V RMS, 140 Vp-p With CT-400: loop model: 31 V RMS, 120 Vp-p	De-energized circuit: 2.4 V RMS, 24 Vp-p
Range detection (open air)	Tip sensor (Energized): Max distance via air: up to 20 ft (6.1 m) Pinpointing: approx. 1.97 in (5 cm) Tip sensor (De-energized): Max distance via air: up to 14.7 ft (4.5 m) Pinpointing: approx. 1.97 in (5 cm)		-	-	-

	AT-6010	AT-6020	AT-6030
Standard Features	Traces energized and de-energized wires	•	•
	Locates energized and de-energized breakers and fuses	•	•
	Finds shorts and opens	•	•
	Non-contact voltage detection	-	•
Advanced Features	"Scan and Locate" breaker finder	•	•
	Two frequency modes for optimal tracing in energized (6 kHz) and de-energized (33 kHz) circuits	•	•
	Three power modes (high, low and loop) for peak performance	-	•
	Receiver display	B&W 2.5 in LCD	Color 2.5 in LCD

Wire Tracer Kit Contents:	AT-6010	AT-6020	AT-6030
AT-6010-R Receiver	•	-	-
AT-6010-T Transmitter	•	-	-
AT-6000-R Receiver	-	•	•
AT-6000-T Transmitter	-	•	•
TL-6000 Test Lead and Accessory Kit	-	•	•
CT-400 Signal Clamp	(optional accessory)	(optional accessory)	•
12 - Rechargeable Batteries (not installed) 3 - Battery Chargers	-	•	•
12 - 1.5 V AA (IEC R6) Batteries (not installed)	•	•	•
CC-6000 Hard Carrying Case	-	•	•
CC-6010 Soft Carrying Case	•	-	-
Hot Stick attachment adapter	(optional accessory)	•	•

INCLUDED: A user manual is included with all kits, refer to the table above for specific models and accessories included in each kit.



AT-6010 Advanced Wire Tracer Kit
Order No. 5044625



AT-6020 Advanced Wire Tracer Kit
Order No. 4867981



AT-6030 Advanced Wire Tracer Kit
Order No. 4867996



★★★★★
Top Rated

"There isn't a day goes by that I don't use this unit."

"With this unit I trust it 100% and so does the crew. Where ever it tells you to mark for the line it has never failed to be on the spot, best system I ever used."

- **AT-6030** customer reviews

100% of customers who reviewed this product also recommend it.

★★★★★
Top Rated

"Amprobe circuit tracers are the best!"

"I'm a commercial electrician and Amprobe makes the best circuit tracers hands down."

- **AT-6020** customer reviews

100% of customers who reviewed this product also recommend it.

AT-7000 Series Advanced Wire Tracer Kits

Get accurate results in minutes with new features and technologies that simplify wire tracing and breaker identification. The Receiver's patented Smart Sensor™, with its innovative new antenna design and advanced signal processor, clearly displays the location and orientation of energized wires in walls, floors and ceilings on the large color TFT LCD screen. The powerful Transmitter utilizes two optimal frequencies for both energized and de-energized wire and breaker tracing, delivering consistently accurate results for novice users and experts alike. The new Scan and Locate feature clearly identifies the one correct breaker or fuse, eliminating the confusion from multiple false positive readings, common in older technology tracing tools.

Best Seller



- Traces wires in walls, ceilings, floors and corners
- Locates breakers and fuses
- Pinpoints shorts and opens
- High resolution 3.5" TFT LCD color display
- Three power modes
 - "High" power mode for normal circuits
 - "Low" power mode for precision tracing in difficult areas
 - "Clamp" power mode provides a boosted signal using signal clamp
- Two automatically selected frequency modes for optimal tracing on energized and de-energized circuits
- Clamp-on attachment (SC-7000) for inducing signal into wires without access to bare conductors
- Embedded help screens make set-up easy and error free

	AT-7020	AT-7030	
Standard Features	Traces energized and de-energized wires	•	•
	Locates energized and de-energized breakers and fuses	•	•
	Finds shorts and opens	•	•
	Non-contact voltage detection	•	•
Advanced Features	Smart Sensor™ - wire position and direction indicator	•	•
	"Scan and Locate" breaker finder	•	•
	Two frequency modes for optimal tracing in energized (6 kHz) and de-energized (33 kHz) circuits	•	•
	Three power modes (high, low and clamp) for peak performance	•	•
	High resolution 3.5" TFT LCD color display	•	•
	Hot Stick attachment adapter (optional accessory)	•	•
	Battery chargers and rechargeable batteries		•
Signal clamp attachment		•	

★★★★★
Top Rated
"Great Tracer"

"I still have a lot to learn about this kit but am very satisfied with my purchase and it will be a very useful tool for years to come."

"This circuit breaker tracer works perfectly but you MUST follow the instructions. The unique auto-calibration system ensures that the correct breaker is identified every time without any false indications."

"One cannot be an Electrician without this tool"

- AT-7000 customer reviews

KIT CONTENTS		AT-7020	AT-7030
AT-7000-R	Receiver unit with Smart Sensor, Tip Sensor and color TFT LCD display	•	•
AT-7000-T	Transmitter with two transmission frequencies (6 kHz and 33 kHz) and three power modes (high, low, clamp)	•	•
TL-7000	Test Lead Set with alligator clips (Black & Red), 30 ft. grounding lead, power cord, plug adaptors and light socket adapter	•	•
CC-7000	Custom Amprobe hard carrying case that securely holds transmitter, receiver, signal clamp, test leads and accessories	•	•
SC-7000	Signal Clamp accessory for inducing a signal into wires without access to bare conductors	(optional accessory)	•
HS-1	Three-way magnetic hanger for AT-7000-T transmitter, allowing for convenient hanging of unit, placement on belt or as a stand	(optional accessory)	•
Additional Accessories			
	Battery chargers (3)	-	•
	Rechargeable AA batteries (10)	-	•
	AA Batteries (10)	•	-

INCLUDED: Refer to the "Kit Contents" table above



AT-7020 Advanced Wire Tracer Kit
Order No. 4313868



AT-7030 Advanced Wire Tracer Kit
Order No. 4313854

AT-1000 Wire Tracer

For basic applications where accuracy and routine troubleshooting are important, choose the Amprobe first-tier circuit tracer.

- Trace energized lines up to 300 V AC or V DC
- Trace unenergized and open conductors
- Identifies breakers and fuses without powering down
- Locates shorts
- Identifies wires in a bundle
- Identifies control, alarm and telephone system wiring
- Traces coaxial cable shield
- Receiver range 1 to 3 feet from a cable being traced



AT-1000 Wire Tracer
Order No. 2731097

	AT-1000
Trace energized lines up to 300 V AC or V DC	100 V → 125 V AC (X1000 Transmitter)
Range 1-3' from a cable being traced	R1000 Receiver

INCLUDED: User manual, batteries (installed), transmitter, receiver, connection cables, carrying case

CT-100 and CT-326-C Current Tracers

For tough industrial applications, we recommend these heavy-duty current instruments to trace live wires buried underground or hidden behind walls up to 4' (1.2 m) deep.

- Performs tests without having to interrupt power
- Locates breakers, neutral and ground lines
- Locates and traces wires in walls, floors, conduit, computer cables, etc.
- Pinpoints shorts and ground faults
- Does not interfere with sensitive electronic equipment



CT-326-C Current Tracer
Order No. 4416119

CT-100 Current Tracer
Order No. 2731189

	CT-100	CT-326-C
Traces energized wires and locates breakers without interrupting power	9 V → 300 V AC/DC	9 V → 300 V AC/DC
Traces non-energized wires (continuity and grounded wire) and pinpoints shorts & ground faults	T-100 Transmitter & 9 V batteries	Transmitter & 9 V batteries
Digital filter to assure accuracy in noisy industrial environments	–	•
Sensitivity settings	3	12

INCLUDED: User manual, transmitter, receiver, connection cables, carrying case



BT-250 Circuit Breaker Tester

Identify circuit breakers quickly and accurately, count on this durable and dependable tracer. Designed for use in residential and light commercial environments.

- Works on all electrical systems from 90 to 250 V AC
- Meets the latest code requirement
- Automatic sensitivity adjustment
- Extremely accurate reading always finds the right breaker



BT-250 Circuit Breaker Tester
Order No. 2731177

BT-120 Circuit Breaker Tester
Order No. 3472789

	BT-120	BT-250
Voltage Range	90 V → 120 V	90 V → 250 V
Frequency Range	50 Hz → 60 Hz	40 Hz → 70 Hz

INCLUDED: User manual, transmitter, receiver

BT-250 only: carrying case, connection cable, light fixture adapter, batteries



For detailed specifications go to amprobe.com



← **Upper Display:**
Reading for AC current

← **Lower Display:**
Reading for V, Hz, Ω , μF
and μA and Temperature

← **Amp-Tip** function for
precise Low Current
Measurement

**Non-Contact
Voltage Detection
(NCV)**



← **Built-in low
pass filter**

← **Input
Terminals**

Clamp Meters

INNOVATION - Amprobe invented the first clamp meter and the innovation has never stopped. Use the selection guide to choose a clamp meter with a complete range of functions to get the job done for Electrical, HVAC and Industrial applications.

ACD-14-PRO Dual Display Clamp Multimeter

Clamp Meter Selection Guide

Choose the clamp meter that's right for your job, from basics to industrial.

	Pg 18	Pg 15	Pg 15	Pg 15	Pg 15	Pg 14	Pg 14	Pg 14	Pg 18	Pg 17	Pg 14	Pg 14	Pg 18	Pg 20	Pg 16	Pg 16	Pg 19	Pg 19	Pg 19	Pg 16	Pg 19
	Electrical																				
	HVAC																				
	Industrial																				
	Large Jaw	Power Quality				Industrial & HVAC	HVAC & Motor Maintenance		HVAC/ELEC		Residential/Commercial Electrical		General Purpose		General Purpose Swivel Clamp		Leakage			Mini	Analog
Safety Rating	CAT IV 600 V	CAT IV 600 V	CAT IV 600 V	CAT IV 600 V	CAT IV 600 V	CAT IV 600 V	CAT III 600 V	CAT III 600 V	CAT III 600 V	CAT III 600 V	CAT III 600 V	CAT III 600 V	CAT III 600 V	CAT III 600 V	CAT III 600 V	CAT III 600 V	CAT III 600 V	CAT III 600 V	CAT III 300 V	CAT III 600 V	CAT IV 600 V
True-rms	•	•	•	•	•	•	•	•	•	•	•	•	•	•	•	•	•	•	•	•	•
AC Voltage (V)	750 V	1000 V	1000 V	1000 V	1000 V	1000 V	600 V	600 V	600 V	600 V	600 V	600 V	600 V	600 V	600 V	600 V	600 V	400 V			600 V
DC Voltage (V)	1000 V	1000 V	1000 V	1000 V	1000 V	1000 V	600 V	600 V	600 V	600 V	600 V	600 V	600 V	600 V	600 V	600 V	600 V				
AC Current (A)	1000 A	600 A	600 A	600 A	1000 A	1000 A	600 A	600 A	600 A	600 A	600 A	600 A	600 A	1000 A	400 A	400 A	60 A	60 A	40 A	300 A	1000 A
DC Current (A)	1000 A			600 A	1000 A	1000 A		600 A				600 A							40 A	300 A	
Microamps			•			•	•	•	•	•							•				
Resistance	•	•	•	•	•	•	•	•	•	•	•	•	•	•	•	•	•	•			•
Capacitance	•	•	•	•	•	•	•	•	•	•	•	•	•	•	•	•	•				
Frequency (Test Leads)	•	•	•	•	•	•	•	•	•	•	•	•	•	•	•	•					
Frequency (Jaw)	•	•	•	•	•	•	•	•					•	•	•						
Duty Cycle	•																				
Relative Zero	•	•	•	•	•	•	•	•	•				•	•	•	•		•	•		
Temperature			•		•	•	•	•	•	•						•					
Diode Test	•	•	•	•	•	•	•	•	•	•	•	•	•	•	•	•					
Continuity Beeper	•	•	•	•	•	•	•	•	•	•	•	•	•	•	•	•		•			•
Non-Contact Voltage		•	•	•	•	•	•	•	•	•	•	•			•	•					•
Power (W)		•	•	•	•																
Autoranging	•	•	•	•	•	•	•	•	•	•	•	•	•	•	•	•	•	•	•	•	•
Total Harmonic Distortion (THD)		•	•	•	•																
Phase Rotation Indication		•	•	•	•	•	•	•													
Motor Rotation Test						•	•	•													
Inrush Current		•	•	•	•	•	•	•	•	•			•								•
Backlight	•	•	•	•	•	•	•	•	•	•	•	•					•				•
Bar Graph		•	•	•	•	•	•	•	•	•	•	•					•	•			
Data Hold	•	•	•	•	•	•	•	•	•	•	•	•	•	•	•	•	•	•	•	•	•
Peak hold (Crest)	•	•	•	•	•	•												•			
Auto Power-Off	•	•	•	•	•	•	•	•	•	•	•	•	•	•	•	•	•	•	•	•	•
Work light (LED)		•	•	•	•	•															
MAX	•	•	•	•	•	•	•	•	•	•	•	•	•	•	•	•	•	•	•	•	•
MIN	•	•	•	•	•	•	•	•	•	•	•	•	•	•	•	•	•	•	•	•	•
Low Pass Filter		•	•	•	•	•	•	•	•	•	•	•					•				•

AMP-200 and AMP-300 Series TRMS and Motor Maintenance Clamp Meters

The AMP-200 and -300 Series True-rms Clamp Meters offer a complete range of measurement functions for modern electrical environments, motor testing and HVAC applications. All models feature True-rms sensing, low pass filters and fast response processors for quick, error-free measurements. The new Amp-Tip function allows for precise measurement of current down to the tenth of an Amp, and a third input jack on the AMP-300 Series enables motor rotation and 3-phase sequence testing. These clamps are surprisingly versatile, designed to eliminate the need for multiple tools and provide all-in-one measurement capabilities.

Best Seller

- **True-rms** for noisy environments
- **Motor testing capabilities** (AMP-300 Series)
- **HVAC features** (AMP-300 Series)
- **Capacitance measurement**
- **Amp-Tip function** for precise measurements on small wires
- **Low pass filter** for variable frequency drives
- **Peak hold** (AMP-330)
- **Work light** (AMP-330)



AMP-330 Industrial Motor Maintenance Clamp Meter
Order No. 4560570



★★★★★
Top Rated
"gives accurate measurement faster than any other meter I've used"
"This is my go to meter"

"This is one of the best meters I have ever owned. It has never failed and always accurate. I actually use this to double check some other products. It's very tough. I use it daily underground in a coal mines."

AMP-330 customer review

100% of customers who reviewed this product also recommend it.

Recommended Accessories

See pg. 60-64 for details about accessories.



TL35B
Test Leads
Order No. 3068232



ELS2A
AC Line Splitter
Order No. 3027072

	AMP-210	AMP-220	AMP-310	AMP-320	AMP-330	BEST ACCURACY
	Order No. 4560537	Order No. 4560543	Order No. 4560555	Order No. 4560562	Order No. 4560570	
Electrical	AC Current	0 to 600.0 A			0 to 1000 A	±1.8% + 5LSD (50 to 100 Hz) AMP-330: ±1.8% + 5LSD (40 to 100 Hz)
	DC Current	-	0 to 600.0 A	-	0 to 600.0 A	±2.0% + 5LSD AMP-330: ±1.8% + 5LSD
	AC Voltage	0 to 600.0 V			0 to 1000.0 V	±1.0% + 5LSD (50 to 60 Hz) AMP-330: ±0.8% + 5LSD (50 to 60 Hz)
	DC Voltage	0 to 600.0 V			0 to 1000.0 V	±1.0% + 5LSD AMP-330: ±0.8% + 5LSD
	Resistance	0.0 kΩ to 60.00 kΩ				±1.0% + 5LSD
	Frequency	5.00 Hz to 999.9 Hz				±1.0% + 5LSD (600 V range) ±1.0% + 5LSD (600 A range) AMP-330: ±1.0% + 5LSD (1000 V range) ±1.0% + 5LSD (1000 A range)
	Amp-Tip Function (precise low current)	•	•	•	•	•
Accommodates Conductors	1.18" (30mm)	1.37" (35mm)	1.18" (30mm)	1.37" (35mm)	2.0" (51mm)	
HVAC	Capacitance	0.0 μF to 2500 μF				±2.0% + 4LSD
	DCμA	-	-	0.0 to 2000 μA		±1.0% + 5LSD
	Temperature	-	-	-40.0 to 752 °F, -40.0 to 400 °C		-40.0 to 14.0 °F (±1.0% +3.0 °F), >14.0 to 99.9 °F (±1.0% +1.5 °F) 100 to 752 °F (±1.0% +2 °F), -40.0 to -10.0 °C (±1.0% +1.5 °C) >-10.0 to 99.9 °C (±1.0% +0.8 °C), 100 to 400 °C (±1.0% + 1 °C)
Motor	3-Phase/Motor Rotation Indication	-	-	•	•	•
	Inrush Current	-	•	•	•	•
	Peak Hold (Crest)	-	-	-	-	•
	Low Pass Filter	•	•	•	•	•

INCLUDED: Test leads, user manual, batteries (installed)
AMP-310, AMP-320, AMP-330 only:
Alligator clip set, banana plug k-type thermocouple



AMP-330

Navigator™ CAT IV Power Quality Clamp Meters

These power quality clamp meters measure power and power factor, total harmonic distortion, individual harmonics, as well as AC/DC voltage, current, capacitance, inrush current analysis and phase sequence. The low pass filter enables voltage and current measurement on variable frequency drives. The Navigator™ joy stick allows quick selection of the numerous measurement features on the large LCD display. The meters are built for rugged industrial environments with CAT IV 600 V/CAT III 1000 V safety rating.

- **THD** (total harmonic distortion) and individual harmonics 1-25
- **Power (KW) and power factor (0-1)** indicates electrical usage and system efficiency
- **True-rms** provides accuracy and dependability
- **Low pass filter** for variable frequency drives
- **Inrush current measurement** for motors
- **Phase rotation indication**
- **MAX/MIN** and smart data hold
- **Peak hold**
- **Auto flashlight** when clamping
- **Large backlit display** with analog bar graph
- **Overmold body absorbs shock** – drop-proof to 4 ft (1.2 m)



ACDC-54NAV
1000A AC/DC TRMS
Navigator Clamp
Order No. 3729989

	ACD-50NAV	ACD-51NAV	ACDC-52NAV	ACDC-54NAV	BEST ACCURACY
	Order No. 3729945	Order No. 3729950	Order No. 3729961	Order No. 3729989	
AC Current	100.00 A, 600.0 A			100.00 A, 1000.0 A	± (1.5% rdg + 5 LSD)
DC Current	-	-	100.00 A, 600.0 A	100.00 A, 1000.0 A	± (1.5% rdg + 5 LSD)
AC Voltage	100.00 V, 1000 V				± (1.0% rdg + 5 LSD)
DC Voltage	100.00 V, 1000 V				± (0.7% rdg + 2 LSD)
Resistance	1.0000 kΩ, 10.000 kΩ, 100.00 kΩ				± (1.0% rdg + 3 LSD)
Frequency	20.0 Hz to 10 kHz				± (0.5% rdg + 3 LSD)
Capacitance	4.000 μF, 4000 μF				± (1.9% rdg + 8 LSD)
DCμA	-	1000.0 μA	-	-	± (1.7% rdg + 2 LSD)
Temperature	-	-50 °F → 1832 °F (-50 °C → 1000 °C)	-	-50°F → 1832 °F (-50°C → 1000 °C)	± (1% rdg + 1°C)
THD (Total Harmonics Distortion)	0.1% → 100.0%				± (3.0% rdg + 10 LSD)
Individual Harmonics	1 → 25				-
Power	10 kW → 600 kW			10 kW → 1000 kW	±(A, error×V, reading + V, error×A, reading)
Power Factor	-1.00 → 1.00				± 3 degrees
Accommodates Conductors	Up to 1.45" (37 mm) in diameter			Up to 1.60" (40 mm) in diameter	

INCLUDED: Test leads, user manual, batteries (installed), thermocouple (ACD-51NAV and ACDC-54NAV only)



★★★★★
Top Rated

"Outstanding performance"

"Best meter I have ever had. Fast measurement. Brilliant display. Rugged. Use mostly for diag. of freq. controlled motors and controllers."

ACDC-54NAV customer reviews

100% of customers who reviewed this product also recommend it.

Navigate Through Any Job

Industrial Electricians	<p>Motor Testing Use inrush current to test motors capacitance, start up capacitors, and phase rotation and three-phase systems</p> <p>Power Quality Quickly determine the efficiency of an electrical system by measuring power factor and working power measurements. Check for harmful harmonics while performing daily system checks</p> <p>Transformers The ideal tool for maintenance and installation of transformers and advanced equipment</p>	<p>ACDC-52NAV ACDC-54NAV</p>
Facilities Maintenance	<p>System Monitoring Assess and monitor the condition of various systems and advanced equipment such as power quality analyzers</p> <p>Performance Testing Verify system efficiency and quickly troubleshoot issues to minimize costly downtime by performing load studies and motor testing system checks</p>	ACD-50NAV
HVAC Technicians	<p>System Monitoring. Maintain large, complex HVAC systems in factories, data centers, hospitals and commercial buildings</p> <p>Performance Testing. Best tool for technicians who need the following critical measurements during HVAC system checks and repairs:</p> <ul style="list-style-type: none"> • Capacitance for checking startup capacitors • Microamps for verification of the flame sensors • Temperature for checking cooling/heating performance • Inrush current for verification of the compressor motor • Low-pass filter to allow measurement of the variable frequency drives 	ACD-51NAV

Recommended Accessories

See pg. 60-64 for details about accessories.



TL35B
Test Leads
Order No. 3068232



ELS2A
AC Line Splitter
Order No. 3027072

AMP-25 AC/DC TRMS Mini-Clamp

Small size doesn't mean small features. The Amprobe AMP-25 Mini-Clamp is pocket-sized, enabling quick and easy spot checks of electrical systems. With its rugged construction and CAT III 600 V rating, the AMP-25 is a must-have professional troubleshooting tool for commercial electricians and electrical contractors. The AMP-25 is designed to measure AC/DC load current and inrush current for motors. Essential features like True-rms, non-contact voltage and low pass filter make this clamp stand tall next to clamps twice its size. With the AMP-25, you never have to sacrifice performance for size.



AMP-25 AC/DC TRMS Mini-Clamp
Order No. 4588254

- True-rms for noisy environments provides accuracy and dependability
- AC & DC current to 300 A (10mA resolution)
- Low pass filter for variable frequency drives
- Inrush current for motor start-up monitoring
- Non-contact voltage detection (NCV)
- Jaw opening to 1 in (25 mm)
- Autoranging
- DCA zero and data hold
- Auto power off
- Large LCD backlit display

	AMP-25	BEST ACCURACY
AC Current	60.00/300.0 A	±(1.5% + 5 LSD) @ 50 to 100 Hz ≥ 3 A ±(2.5% + 5 LSD) @ 100 to 400 Hz ≥ 3 A
DC Current	60.00/300.0 A	±(1.5% + 5 LSD) @ 300 A range
Low Pass Filter	•	
True-rms	•	
Inrush Current	•	
Non-Contact Voltage	•	
Data Hold	•	

INCLUDED: Carrying case, batteries, and user manual

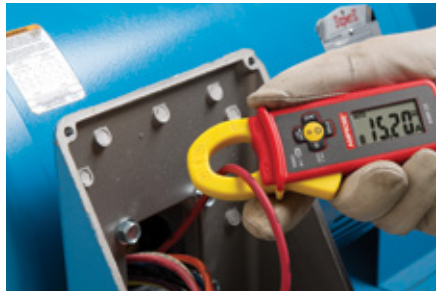


★★★★★
Top Rated

“This is a great product

I carry the AMP-25 in my pocket on a daily basis, with a pocket meter. It is small enough that I don't notice it, and it is great to take on a check of a motor before you drag out the tool bag and the normal meter. Fits in tight places. Really easy to use and long stand by battery life.”

- AMP-25 customer review



Utilize the inrush current function for motor start-up monitoring.



Pocket-sized for quick and easy spot checks of electrical systems.



ACD-235W Swivel™ Clamp Meter
Order No. 3804941

Swivel™ Clamp Meters

Get fast and easy testing for HVAC and electrical applications. See measurements in tight or inconvenient spaces with the patented 180-degree rotating head design of Amprobe's Swivel™ Clamp Meters. The slim jaw puts all features within reach for one-handed operation.

- 180-degree rotating head
- VolTect™ non-contact voltage detection
- Audible continuity
- Auto ranging for quick checks
- Manual ranging for precise measurements
- Data hold

	ACD-205W Order No. 3472723	ACD-235W Order No. 3804941	BEST ACCURACY
True-rms	-	•	-
AC Current	40.00 A, 400.0 A		± (2.0% rdg + 10 LSD) 50 Hz → 60 Hz
AC Voltage	4.000 V, 40.00 V, 400.0 V, 600.0 V		± (1.2% rdg + 8 LSD) → 50 Hz → 500 Hz at 4 V → 400 V ranges
DC Voltage	400.0 mV, 4.000 V, 40.00 V, 400.0 V, 600.0 V		± (0.5% rdg + 2 LSD)
Resistance	400.0 Ω, 4.000 kΩ, 40.00 kΩ, 400.0 kΩ, 4.000 MΩ, 40.00 MΩ		± (1.0% rdg + 4 LSD) at 400 Ω → 400 kΩ ranges
Capacitance	-	4.000 μF, 40.00 μF, 400.0 μF, 4.000 μF	± (3.0% rdg + 5 LSD) on 40 μF → 400 μF ranges
Temperature	-	-30 °F → 400 °F, (-35 °C → 400 °C)	± (1.0% + 2 °F) 32 °F → 400 °F ± (1.0% + 1 °C) 0 °C → 400 °C
Diode Test	•	-	-
VolTect™ non-contact voltage detection	70 V → 600 VAC (50 Hz → 60 Hz)		-
Backlight	-	•	-
Accommodates Conductors	Up to 1.18" (30 mm) in diameter		

INCLUDED: Test leads, battery (installed), user manual, carrying case, K-type thermocouple (ACD-235W only)



Recommended Accessories
See pg. 60-64 for details about accessories.



ELS2A AC Line Splitter
Order No. 3027072

Best Seller

ACD-14-PRO Dual Display 600 A TRMS Clamp Multimeter

The ACD-14-PRO offers a complete range of measuring functions for both HVAC and electrical applications featuring a large backlit LCD dual display, capable of simultaneously displaying voltage and amps. The ACD-14-PRO includes TRMS, low pass filter, inrush current, frequency, resistance, capacitance, temperature, DC microamps, Amp-Tip and non-contact voltage detection. The Amp-Tip function allows for precise measurement of current down to the tenth of an amp for reliable, accurate current measurement of both large and small diameter wires. The low pass filter allows measurement of current and voltage on variable frequency drives (motors with speed controlled by frequency).

- Large LCD with dual display that can display voltage and amps concurrently
- True-rms for accurate voltage measurements in noisy environments
- Low pass filter for current and voltage measurements on variable frequency drives
- Amp-Tip function for precise low current measurement down to 0.1 amp
- HVAC applications with temperature
- DC microamps, capacitance, inrush current and temperature
- Non-contact voltage detection (NCV)
- Audible continuity and diode test
- Data hold
- Auto ranging
- Auto power off
- Low battery indicator

	ACD-14-PRO
AC Voltage (Digital Low-Pass Filter, True-rms)	Range: 0.0 to 600.0 V, Accuracy: $\pm 1.0\% + 5\text{LSD}$ (50 to 60 Hz)
DC Voltage	Range: 0.0 to 600.0 V, Accuracy: $\pm 1.0\% + 5\text{LSD}$
AC Current (True-rms)	Range: 0.00 to 600.0 A, Accuracy: $\pm 1.8\% + 5\text{LSD}$ (50 to <100 Hz) $\pm 2.0\% + 5\text{LSD}$ (100 to 400 Hz)
Precise Low Current AC (Amp-Tip)	Range: 0.00 to 60.00 A, Accuracy: $\pm 1.5\% + 5\text{LSD}$ (50 to 60 Hz)
DC Microamps	Range: 0.0 to 2000 μA , Accuracy: $\pm 1.0\% + 5\text{LSD}$
Capacitance	Range: 200.0 μF , 2500 μF , Accuracy: $\pm (2.0\% + 4\text{LSD})$
Diode Test	Range: 0.0 to 3.000 V, Accuracy: $\pm (1.5\% + 5\text{LSD})$
Temperature* (Type K thermocouple) *K-type thermocouple accuracy tolerances not included	Range: -40.0 to 752 °F, -40.0 to 400 °C, Accuracy: $\pm 1.0\% + 1.5\text{ }^\circ\text{F}$ (-40.0 to 99.9 °F) $\pm 1.0\% + 2\text{ }^\circ\text{F}$ (100 to 752 °F) $\pm 1.0\% + 0.8\text{ }^\circ\text{C}$ (-40.0 to 99.9 °C) $\pm 1.0\% + 1\text{ }^\circ\text{C}$ (100 to 400 °C)
Non-Contact Voltage	•
Backlight	•
Auto Power Off	•

INCLUDED: User manual, test leads, carrying case, batteries, banana plug K-type thermocouple



Test Voltage and Amperage at the same time

The ACD-14-PRO offers a complete range of measuring functions for both HVAC and electrical applications. This modern clamp meter features a large backlit LCD dual display and is capable of simultaneously displaying voltage and amps. The ACD-14-PRO is packed with features including TRMS, low pass filter, in-rush current, frequency, resistance, capacitance, temperature, DC micro-amps, Amp-Tip and non-contact voltage detection.

The Amp-Tip function allows for precise measurement of current down to the tenth of an amp for reliable, accurate current measurement of both large and small diameter wires. The low pass filter allows measurement of current and voltage on variable frequency drives (motors with speed controlled by frequency). The meter features a rubber over-mold enclosure that provides extra durability and is safety rated to CAT III 600 V.

The Amprobe ACD-14-PRO can test and display voltage and current measurements simultaneously with the large backlit LCD dual display, for voltage drop tests and other applications.



ACD-14-PRO Dual Display 600 A Trms Clamp Multimeter

Order No. 4718977

★★★★★
Top Rated

"Great HVAC Meter!"

"This meter has everything a HVAC tech would need in a light weight, compact meter. It has all the features any HVAC residential technician would need to get the job done and get these customers back up and running!"

- ACD-14-PRO customer reviews

100% of customers who reviewed this product also recommend it.



ACD-10 PLUS Clamp Multimeter with Uniquely Thin Jaws

With thinner jaws than standard clamp multimeters (only 0.4"/10 mm thick), the ACD-10 PLUS and ACD-14 PLUS allow access to tight measurement areas and still accommodate conductors up to 1"/25 mm.



ACD-10 PLUS
Clamp Multimeter
Order No. 4588254

ACD-14 PLUS Dual Display Clamp Multimeter
Order No. 4588254

ACD-14 PLUS Dual Display Digital Clamp Multimeter

The professional's choice for both HVAC and electrical applications with a complete set of measurement features including dual displays that allow you to view amperage and voltage measurements simultaneously.

- Continuity buzzer
- Hold and maximum reading functions
- Auto ranging
- Auto power off and low battery indication
- Rubber over-molded case
- Frequency is measured by either jaws or test leads (ACD-10 PLUS only)
- Microamps for testing flame sensors (ACD-14 PLUS only)
- Diode test (ACD-14 PLUS only)

	ACD-10 PLUS	ACD-14 PLUS
True-rms	-	-
AC Voltage	4.000 V, 40.00 V, 400.0 V, 600 V	
DC Voltage	400.0 mV, 4.000 V, 40.00 V, 400.0 V, 600 V	
AC Current	40.00 A, 400.0 A, 600 A	
Resistance	400.0 Ω, 4.000 kΩ, 40.00 kΩ, 400.0 kΩ, 4.000 MΩ, 40.00 MΩ	
Capacitance	500.0 nF, 5.000 μF, 50.00 μF, 500.0 μF, 3000 μF	
Frequency	40 Hz → 400 Hz with Jaw, 10 Hz → 100 kHz with test leads	
Temperature	-	-4 °F → 999 °F (-20 °C → 537 °C)
Dual Displays	-	•
Microamps	-	•
Accommodates Conductors	up to 1.0" (25 mm) in diameter	

INCLUDED: Test leads, battery (installed), soft carrying pouch, K-type thermocouple with banana plug (ACD-14 PLUS only), user manual



★★★★★
Top Rated

"Great all around meter!"

"I've been using this style of meter doing HVAC work for the past 10 years. I really like the versatility that it offers and have been pleased with the service it offers."

- **ACD-14-PLUS customer review**



ACD-235W
Swivel™ Clamp Meter
Order No. 3804941

ACDC-3400 IND AC/DC CAT IV Industrial Clamp Meter

If an industrial or utility testing application demands a higher level of safety, reach for this CAT IV rated Clamp Meter.

- Extra large jaws accommodate thick wires
- True-rms for accuracy and dependability
- Peak hold
- Auto and manual ranging
- Auto power off
- Data hold
- Backlight
- Diode test
- MAX/MIN recording
- Audible continuity

	ACDC-3400 IND
True-rms	•
DC Voltage	660.0 mV, 6.600 V, 66.00 V, 660.0 V, 1000 V
AC Voltage	660.0 mV, 6.600 V, 66.00 V, 660.0 V, 750 V
AC Current	66.00 A, 660.0 A, 1000 A
DC Current	660.0 A, 1000 A
Resistance	660.0 Ω, 6.600 kΩ, 66.00 kΩ, 660.0 kΩ, 6.600 MΩ, 66.00 MΩ
Capacitance	6.600 nF, 66.00 nF, 660.0 nF, 6.600 μF, 66.00 μF, 660.0 μF, 6.6 mF
Frequency	66.00 Hz, 660.0 Hz, 6.600 kHz, 66.00 kHz, 660.0 kHz, 1.000 MHz
Continuity	•
Accommodates Conductors	Up to 2.0" (51 mm) in diameter

INCLUDED: Deluxe carrying case, test leads, battery (installed), user manual.



Recommended Accessories
See pg. 60-64 for details about accessories.



TL35B
Test Leads
Order No. 3068232

ELS2A
AC Line Splitter
Order No. 3027072

ALC-110 Leakage Current Clamp

Prevent unplanned downtime by detecting leakage currents with the ALC-110 Leakage Current Clamp. Rated CAT III 600 V to ensure electrical safety, the ALC-110 is designed to resist external magnetic fields for highly accurate readings.

- Low influence of external low frequency magnetic fields
- True-rms measurements
- Mechanical jaw lock
- Highest resolution of 0.001 mA
- Broad frequency range 15 Hz to 1 kHz
- Selectable filters
- Selectable limits
- Max readings and hold function
- High safety rating: CAT III 600 V
- Battery-saving design with an auto backlight off and auto power off

	ALC-110
Low frequency magnetic fields	≤ 30 A/m, operating class 2 @ IN : 3.500 mA to 600.0 mA/40 Hz to 1 kHz
AC frequency	15 Hz to 1 kHz
Low pass filter	50 Hz to 60 Hz, for appliance measuring acc. EN61557-16 amendment A, no filter
Limit judgement	0.25 mA, 0.5 mA, 3.5 mA, 10 mA, 12 mA
Data hold	•
True-rms	•

INCLUDED: Batteries, soft carrying case, user manual



ALC-110 Leakage Current Clamp

Order No. 4930876

RS-1007 PRO CAT IV Analog Clamp Meter

Take these clamp meters to extremes. Digital clamp meters have LCD screens that tend to freeze below 32°F (0°C), but the Amprobe analog clamp meters can take extreme heat or cold and keep on measuring amps and volts without problems or batteries.

- Easy-to-read rotary scale
- Works in temperatures from 5°F to 122°F
- Does not need batteries to measure volts or amps
- Operates on 50Hz and 60Hz frequencies
- Pointer lock - data hold

	RS-1007 PRO
AC Voltage	150 V, 300 V, 600 V
AC Current	15 A, 40 A, 100 A, 300 A, 1000 A
Resistance	1000 Ω
Continuity	•
Accommodates Conductors	up to 1.88" (47 mm) in diameter

INCLUDED: Test leads, battery (installed, for resistance measurement only), user manual, carrying case



RS-1007 PRO CAT IV Analog Clamp Meter

Order No. 3467476

AC50A Leakage Current Clamp Multimeter

Great for applications requiring measurement of leakage and fault currents, this clamp measures low AC current down to microamps.

- Min/max control to see largest/smallest values in a series of measurements
- Relative value measurement to determine differentials
- Data hold to freeze measurement value on the display
- Digital display with analog bar graph
- Auto power off to save battery life
- Minimum resolution 0.01 mA

AC50A Leakage Current Clamp Multimeter

Order No. 3033017



LH41A AC/DC Low Current Clamp Meter

This highly accurate leakage clamp takes precise low-current measurements with 1mA resolution up to 4A; 10mA resolution from 4A to 40A

- Data hold
- Auto power off
- Auto zero button to zero display for DC
- Excellent accuracy and resolution

LH41A AC/DC Low Current Clamp Meter

Order No. 3030898

	AC50A	LH41A
AC Voltage	400.0 V	—
AC Current	40.00 mA, 400.0 mA, 4.000 A, 40.00 A, 60.0 A	4.000 A, 40.00 A
DC Current	—	4.000 A, 40.00 A
Resistance	400 Ω	—
Continuity	•	—
Accommodates Conductors	up to 1.2" (30 mm) in diameter	up to 0.78" (20 mm) in diameter

INCLUDED: Batteries (installed), user manual, test leads (AC50A only), carrying case (AC50A only)



Recommended Accessories

See pg. 60-64 for details about accessories.



TL35B Test Leads

Order No. 3068232

ACD-6 PRO Digital Clamp Meter

This high-current clamp doubles as a multimeter for AC and DC voltage, resistance and continuity.

- Auto and manual ranging
- Relative zero mode
- Auto power off
- Data hold
- Diode test
- Audible continuity

	ACD-6 PRO	BEST ACCURACY
DC Voltage	400.0 mV, 4.000 V, 40.00 V, 400.0 V, 600 V	1.0% + 3 LSD
AC Voltage	600 V	2.0% + 5 LSD
AC Current	400.0 A, 1000 A	1.5% + 5 LSD
Resistance	400.0 Ω, 4.000 kΩ, 40.00 kΩ, 400.0 kΩ, 4.000 MΩ, 40.00 MΩ	1.0% + 4 LSD
Accommodates Conductors	up to 1.77" (45 mm) in diameter	-

INCLUDED: Carrying case, batteries (installed), user manual



ELS2A
AC Line Splitter
Order No. 3027072

Recommended Accessories
See pg. 60-64 for details about accessories.



TL35B
Test Leads
Order No. 3068232

ELS2A
AC Line Splitter
Order No. 3027072



ELS2A AC Line Splitter

Measure the current on a 2-wire or 3-wire power cord up to 15 A without having to cut off the plug and separate the conductors, or open electrical boxes on 120 V lines. Use with any Amprobe clamp meter.

- Two measurement loops, 1X and 10X for increased sensitivity
- Built-in voltage measurement jacks to check for voltage sags and surges
- Rated for 120 V, 15 Amps



ELS2A
AC Line Splitter
Order No. 3027072





AM-570 Industrial Digital Multimeter

←..... **Backlit dual display** for readability in low-light conditions

←..... **Measures AC/DC voltage** up to 1000V, ac/dc current

←..... **Dual thermocouples** for differential temperature measurements

Digital Multimeters

CHOICE - Part of a great value is getting exactly what you need in a tool – nothing more or less. With the Amprobe broad selection of digital multimeters, you can find the perfect match for any job. From the industrial meters safety-rated for CAT IV electrical environments, to simple pocket-sized meters, you'll find a digital multimeter that fits your needs.

Digital Multimeter Selection Guide

Rugged, high performance multimeters for troubleshooting any application

	<i>HD110C</i>	<i>HD160C</i>	<i>AM-510</i>	<i>38XR-A</i>	<i>AM-530</i>	<i>AM-510</i>	<i>37XR-A</i>	<i>AM-500</i>	<i>DM73C</i>	<i>PM51A</i>	<i>PM55A</i>	
	Pg 25	Pg 25	Pg 23	Pg 24	Pg 23	Pg 23	Pg 24	Pg 26	Pg 26	Pg 26	Pg 26	
					Electrical							
	HVAC											
	Industrial											
	Heavy Duty	Heavy Duty & HVAC	Industrial maintenance & HVAC		HVAC/ELEC	Residential/Commercial Electrical		General Purpose	Pen-style Digital Multimeter	Pocket Digital Multimeter		
Safety Rating	CAT IV 1000 V	CAT IV 1000 V	CAT IV 600 V	CAT IV 600 V	CAT III 600 V	CAT III 600 V	CAT III 600 V	CAT III 600 V	CAT II 600 V	CAT II 600 V	CAT II 600 V	
True-rms		•	•	•	•		•					
AC Voltage (V)	1000 V	1000 V	1000 V	750 V	600 V	600 V	750 V	600 V	600 V	600 V	600 V	
DC Voltage (V)	1500 V	1500 V	1000 V	1000 V	600 V	600 V	1000 V	600 V	600 V	600 V	600 V	
AC Current (A)	2 A	2 A	10 A	10 A	10 A	10 A	10 A	10 A			2000 µA	
DC Current (A)	2 A	2 A	10 A	10 A	10 A	10 A	10 A	10 A			2000 µA	
Microamps		•	•	•	•	•	•	•			•	
Resistance	•	•	•	•	•	•	•	•		•	•	
Capacitance		•	•	•	•	•	•		•	•	•	
Inductance							•					
Frequency		•	•	•	•	•	•			•	•	
Duty Cycle			•	•		•	•					
Relative Zero		•	•	•	•	•	•					
Temperature Inputs		1	2	1	1							
Diode Test	•		•	•	•	•	•	•	•	•	•	
Continuity Beeper	•	•	•	•	•	•	•	•	•	•	•	
Non-Contact Voltage			•		•	•					•	
Logic Test							•					
Autoranging		•	•	•	•	•	•	•	•	•	•	
Battery Test						•		•				
DC Loop Current 4-20m A				•								
dBm Reading				•			•					
Backlight		•	•	•	•	•	•	•				
Bar Graph		•	•	•	•	•	•					
Data Hold	•	•	•	•	•	•	•	•	•	•	•	
Peak Hold (Crest)			•	•			•					
AutoTest Function (V,A,R)											•	
Data Logging				•								
PC Interface Capabilities				•								
Auto Power Off	•	•	•	•	•	•	•	•	•	•	•	
Work Light (LED)			•		•	•						
Low Pass Filter			•									
Low Z			•									

AM-500 Series Digital Multimeters

Best-in-class autoranging, digital multimeters with features for residential, commercial electrical, industrial and HVAC applications. Features include True-rms, dual thermocouples for measuring temperature differential, low impedance to detect stray voltage, low pass filter to accurately measure variable frequency drives and a built-in flashlight.

Best Seller



AM-510 Commercial Residential Multimeter
Order No. 4018636

AM-510 Commercial/Residential Multimeter

Designed for light commercial and advanced residential applications, the AM-510 enables you to re-wire an electrical panel, install light fixtures, troubleshoot home appliances, electrical sockets and automotive electrical issues.

- Voltage up to 600 V AC/DC, AC/DC current and resistance
- Frequency, capacitance and duty cycle
- VolTect™ non-contact voltage detection
- Audible continuity, diode test, backlit LCD display, data hold and relative zero mode

AM-530 True-rms Electrical Contractor Multimeter

Quickly troubleshoot voltage, perform repairs, run new wiring, check continuity on electrical connections, identify blown fuses and check motors or transformers. The AM-530 is the perfect multimeter for the professional electrician.

- Voltage up to 600 V AC/DC, AC/DC current, resistance, frequency, capacitance, and temperature
- True-rms
- VolTect™ non-contact voltage detection
- Audible continuity, diode test, backlit LCD display, data hold and relative zero mode

AM-570 Industrial Multimeter

For professional electricians who need to maintain service or troubleshoot advanced electrical systems, the AM-570 is packed full of features such as True-rms, dual thermocouples, a low impedance mode and low pass filter to accurately take measurements on variable frequency drives.

- AC/DC Voltage up to 1000 V, AC/DC current, resistance, frequency, capacitance, temperature and duty cycle
- Low Z – to detect stray voltages
- Low pass filter for variable frequency drives
- VolTect™ non-contact voltage detection
- Audible continuity, diode test, backlit LCD display, data hold and relative zero mode

★★★★★
Top Rated

"Great product. High quality. Wide array of functions."

"The AM-510 is everything I need for my home needs. It has helped me troubleshoot quite a few problems that have come up. For the value especially, this is the perfect multimeter for the home user."

- AM-510 customer review



Series Selection Guide		AM-510	AM-530	AM-570	
		Order No. 4018636	Order No. 4018651	Order No. 4210340	
	Application	Res/Com	Electrical	Industrial	
Functions	Measure voltage in noisy environments	True-rms	•	•	
	Electrical panels, AC outlets	AC Voltage (V)	600 V	600 V	1000 V
	DC systems, auto/marine batteries	DC Voltage (V)	600 V	600 V	1000 V
	AC Current - electrical panels, appliances	AC Current (A)	10 A	10 A	10 A
	DC Current - electronics, DC motors	DC Current (A)	10 A	10 A	10 A
	Specified resistance and continuity	Resistance (MOhms)	40 MΩ	40 MΩ	60 MΩ
	Flame sensors	Microamps	•	•	•
	Diodes in AC to DC converters	Diode test	•	•	•
	Fuses, light bulbs, wire connections	Continuity	•	•	•
	Household batteries	Battery test	•	–	–
	Motor startup or run capacitors	Capacitance	•	•	•
	Frequency verification	Frequency	•	•	•
	Non-contact voltage detection	VolTect™	•	•	•
	Electrical load-time on vs. time off	Duty cycle	•	•	•
Temp of air vents, fuses, transformers	Temperature inputs	–	1	2	
Features	Automatically selects measurement range	Autoranging	•	•	
	Manually select measurement range	Manual ranging	•	•	
	Voltage on variable frequency drives	Low pass filter	–	–	•
	Detect stray voltages	Low Z	–	–	•
	Dimly lit areas	Built-in flashlight	•	•	•
Display	Meter resolution	LCD counts	4,000	4,000	6,000
	Dimly lit areas	Backlight	•	•	•
	Monitoring fast changing signals	Bar graph	–	•	•
	Two relative measurements on one screen	Dual display	–	–	•
Events	Data memory	Data hold	•	•	•
	Difference between two measurements	Relative reading	•	•	•
	Max/min peak measurement	Max/min hold	–	•	•
	Specialized signal measurements	Peak hold (crest)	–	–	•

Recommended Accessories

See pg. 60-64 for details about accessories.



DL248D Deluxe Test Leads Kit
Order No. 3026866



TPK-62 Temperature Adapter and 2 Thermocouples (for AM-570)
Order No. 4160703



TPK-59 Thermocouple (for AM-530)
Order No. 2733660

INCLUDED: Test leads (pair), batteries (installed), user manual
(AM-530, AM-570 only): carrying case with velcro strap
K-type thermocouple (AM-570 includes 2 K-type thermocouples),
(AM-570 only): temperature adaptor



XR Series True-rms Digital Multimeters

The XR Multimeter Series let you customize features and functions for electronic or electrical applications, plant maintenance or HVAC applications. HVAC contractors and field service technicians have a choice of the manual ranging 37XR-A with capacitance or the autoranging or the True-rms 38XR-A with temperature and backlight.

For electronics troubleshooting, the True-rms 37XR-A offers component and logic test. If you're an engineer, designing or troubleshooting industrial automation and control systems, check out the 38XR-A, a True-rms multimeter with bright blue backlight and an optical PC interface.

- Autoranging
- Min/max and data hold
- Separate door for easy battery and fuse access
- Low battery indication
- Relative, peak, and average and data hold
- Analog bar graph
- Input warning tone when test leads are in wrong jack
- Auto power-off to save battery life



38XR-A True-rms Digital Multimeter
Order No. 2727824

★★★★★
Top Rated

“WOW! Is This Thing Built!”

“I am an Electronic Field Tech and for this job you'd be hard pressed to find a finer DMM. The 37XR-A is the most rugged and feature packed meter I've owned. Having to carry everything I need in one kit, the 37XR-A does the job of several meters which means that I have less to carry. If you are looking for an accurate, tough, & do all True RMS DMM, this is the only meter you need!”

- 38XR-A customer review

	37XR-A	38XR-A
	Order No. 2727808	Order No. 2727824
True-rms		•
DC Voltage	1.000 mV, 10.00 V, 100.0 V, 1000 V	
AC Voltage	1.000 mV, 10.00 V, 100.0 V, 1000 V	
DC Current	100.0 µA, 1.000 µA, 10.00 mA, 100.0 mA, 400.0 mA, 10.00 A	
AC Current	100.0 µA, 1.000 µA, 10.00 mA, 100.0 mA, 400.0 mA, 10.00 A	
Resistance	1000.0 Ω, 10.000 kΩ, 100.00 kΩ, 1000.0 kΩ, 10.00 MΩ, 40.00 MΩ	
Continuity		•
Diode		•
Capacitance	40.00 nF, 400.0 nF, 4.000 µF, 40.00 µF, 400.0 µF	
Frequency	100.00 Hz, 1.0000 kHz, 10.000 kHz, 100.00 kHz, 1.0000 MHz, 10.000 MHz	
Temperature	-	-4°F → 2327°F (-20°C → 1300°C)
Duty cycle		0.00% → 90.0%
Logic test	•	-
Inductance	40 H	-
dBm		-13 dBm → + 50 dBm

INCLUDED: Magne-Grip™ holder with magnetic hanging strap, universal, K-type thermocouple (38XR-A only), batteries (installed), test leads



38XR-A only



Recommended Accessories

See pg. 60-64 for details about accessories.



DL248D Deluxe Test Leads Kit
Order No. 3026866



CT235A Clamp Attachment
Order No. 3026809



CT237B Clamp Attachment
Order No. 3511514



CT238A Clamp Attachment
Order No. 3026827



38SW-A, USB-KIT3 Software kit 38XR-A
Order No. 3026827

HD110C and HD160C Heavy-duty Multimeters

Built for harsh environments, these unusually rugged meters offer extra features and superior protection that keep them operating reliably in heavy-duty applications. The meter's molded plastic case is made from flame-retardant thermoplastic to help protect against fire, chemicals, grease, falls, impacts, and abrasions.

- Measures up to 1500 V DC and 1000 V AC and withstands transients up to 12 kV (CAT IV 1000 V) – unmatched by other digital multimeters
- IP 67 rated and sealed to prevent dirt, grime and moisture from entering the case and causing inaccurate readings or damaging shorts
- Tough, fire-retardant thermoplastic resists grease and chemical spills and other environmental hazards
- All sensitive components are shock-mounted for drop resistance to at least eight feet
- Magne-Grip™ holder with magnetic hanging strap frees both hands for work
- Automatic polarity indication
- Superior 10,000 count resolution with bar graph
- Bright backlight for superior visibility
- Auto power-off to save batteries plus low battery indication



HD160C Heavy Duty Trms Multimeter
Order No. 2670787

	HD110C	HD160C
	Order No. 2670779	Order No. 2670787
True-rms	–	•
DC Voltage	200.0 mV, 2.000 V, 20.00 V, 200.0 V, 1500 V	1000.0 mV, 10.000 V, 100.00 V, 1500.0 V
AC Voltage	200.0 mV, 2.000 V, 20.00 V, 200.0 V, 1000 V	1000.0 mV, 10.000 V, 100.00 V, 1000.0 V
Current AC/DC	200.0 µA, 2.000 mA, 20.00 mA, 200.0 mA, 2.000 A	100.00 µA, 1000.0 µA, 10.000 mA, 100.00 mA, 400.0 mA, 2.000 A
Resistance	200.0 Ω, 2.000 kΩ, 20.00 kΩ, 200.0 kΩ, 2.000 MΩ, 20.00 MΩ	1000.0 Ω, 10.00 kΩ, 100.00 kΩ, 1000.0 kΩ, 10.000 MΩ, 40.00 MΩ
Diode	•	–
Continuity	•	•
Frequency	–	100.00 Hz, 1000.0 Hz, 10.000 kHz, 100.00 kHz, 1000.0 kHz, 10.000 MHz
Capacitance	–	40.00 nF, 400.0 nF, 4.000 µF, 40.00 µF, 400.0 µF
Temperature	–	-4°F → 2372°F (-20°C → 1300°C)

INCLUDED: Test leads, batteries (installed), user manual, Magne-Grip™ holder with magnetic hanging strap, K-type thermocouple, threaded alligator clips



★★★★★
Top Rated

“Great product with unlimited features”

“The HD160C-IP67 is a versatile instrument that allows me to carry just one instrument instead of several. Checking out panels, resistance and performing HVAC control wiring and trouble shooting, it is a hard instrument to beat. All of the electricians on my jobs and HVAC technicians carry the one versatile tester the Amprobe HD160C-IP67!”

- **HD160C** customer reviews

Why You Need a True-rms Reading Multimeter.

Answer: True-rms instruments are accurate on any AC waveform. There are two basic AC measuring systems. One is "Average Sensing, RMS Indicating." This is the most common system because it is affordable and easy to manufacture. An instrument with this type of measuring system measures the average of a sine wave, and then multiplies it by 1.112, allowing the instrument to indicate RMS. This measuring system is only accurate on sine waves.

The second measuring method is called "RMS Sensing, RMS Indicating." An instrument with this type of measuring system computes the RMS value of the measured waveform (sine or otherwise). This is referred to as "True-rms" reading. This measuring system is accurate for any waveform. When an average sensing instrument is used on a non-sinusoidal waveform, measurement accuracy could be off as much as 50%. Since you may not know what type of AC waveform you are measuring, a True-rms instrument should be used whenever possible.



Recommended Accessories

See pg. 60-64 for details about accessories.



DL248D Deluxe Test Leads Kit
Order No. 3026866



CT235A Clamp Attachment
Order No. 3026809



CT237B Clamp Attachment
Order No. 3511514



CT238A Clamp Attachment
Order No. 3026827

AM-500 Autoranging Multimeter

For residential or DIY applications. Install, troubleshoot or repair light fixtures, fans, appliances or automotive electrical problems with the ease and safety of a CAT III 600 V rated product.



AM-500 Autoranging Multimeter
Order No. 4018624

- Autoranging feature automatically sets up voltage, current, and resistance ranges
- Voltage up to 600 V AC/DC
- Resistance
- Audible continuity
- Data hold
- Diode test
- Auto power-off

	AM-500	BEST ACCURACY
AC Voltage	2.000 V, 20.00 V, 200.0 V, 600 V	±(1.0% Rdg + 3 LSD) @ 45 Hz → 400 Hz, 2 V to 200 V ranges
DC Voltage	200 mV, 2.000 V, 20.00 V, 200.0 V, 600 V	±(0.8% Rdg + 1 LSD) @ 2 V → 200 V ranges
Resistance	200.0 Ω, 2.000 kΩ, 20.00 kΩ, 200.0 kΩ 2.000 MΩ, 20.00 MΩ	±(1.0% Rdg + 2 LSD) @ 2 kΩ → 200 kΩ ranges
AC Current	200.0 μA, 2000 μA, 20.00 mA, 200.0 mA 2.000 A, 10.00 A	±(1.2% Rdg + 2 LSD) @ 200 μA to 200 mA ranges, 45 Hz → 400 Hz
DC Current	200.0 μA, 2000 μA, 20.00 mA, 200.0 mA 2.000 A, 10.00 A	±(1.0% Rdg + 2 LSD) @ 200 μA → 20 mA ranges
Battery Test	1.5 V, 9 V	±(10% Rdg + 3 LSD)

INCLUDED: Test leads (pair), batteries (installed), user manual



DM73C Multimeter with Built-in Test Probe
Order No. 2727739

DM73C Multimeter with Built-in Test Probe

Take one-handed measurements with this pocket-sized pen-style digital multimeter.

- Continuity beeper
- LCD display plus analog bar graph
- Auto power-off

	DM73C
AC Voltage	3.400 V, 34.00 V, 340.0 V, 600 V
DC Voltage	3.400 V, 34.00 V, 340.0 V, 600 V
Resistance	340.0 Ω, 3.400 kΩ, 34.00 kΩ, 340.0 kΩ, 3.400 MΩ, 34.00 MΩ

INCLUDED: Test lead with alligator clip, batteries (installed), spare tip, user manual



PM51A Pocket Multimeter
Order No. 2727700

PM Series Pocket Multimeters

Great things do come in small packages. Get innovative features, a full set of measurement functions and high safety ratings in an ultra-compact size. Only 3/8" (9.5 mm) thick, each meter weighs less than 3 oz (85 g).

- Easy, one-touch button control
- Oversize, easy-to-read digital display
- VoltTect™ non-contact voltage detection (PM55A only)
- Automatically selects AC volts, DC volts or resistance, for convenience (PM55A only)
- Low Z input impedance detect ghost voltages
- Hi Z input impedance for electronic circuitry (PM55A only)
- Continuity beeper
- Diode test
- Data hold
- 30 ms high speed max hold
- Autoranging
- Auto power off

	PM51A	PM55A
AC/DC Voltage	400.0 mV, 4.000 V, 40.00 V, 400.0 V, 600 V	6.000 V, 60.00 V, 600.0 V
AC/DC Current	–	400.0 μA, 2000 μA
Frequency	400 Hz, 4 kHz, 40 kHz, 400 kHz, and 1 MHz	10.00 Hz → 30.00 kHz
Resistance	400.0 Ω, 4.000 kΩ, 40.00 kΩ, 400.0 kΩ, 4.000 MΩ, 40.00 MΩ	600.0 Ω, 6.000 kΩ, 60.00 kΩ, 600.0 kΩ, 6.000 MΩ
Capacitance	500.0 nF, 5.000 μF, 50.00 μF, 500.0 μF, 3000 μF	100.0 nF, 1000 nF, 10.00 μF, 100.0 μF
VoltTect™ Non-Contact Voltage Detection	–	•

INCLUDED: Carrying case, battery (installed), user manual



PM55A Pocket Multimeter
Order No. 2727721



DM-5 Power Quality Analyzer

Wireless control for remote checks and adjustments



Large, full-color screen with step-by-step Quick Start Guide

High performance processor for accurate, detailed data recordings

Power Quality Insulation Ground Resistance

EFFICIENCY - Reduce downtime, predict equipment life and cut energy costs with Amprobe tools. Amprobe insulation resistance testers support your preventative maintenance programs while Amprobe power quality tools help you conserve energy and keep your equipment operating at peak performance.

DM-5 Power Quality Analyzer

Poor power quality is costly – not only can it drive up energy bills with excessive power usage, but equipment failure or damage caused by poor power quality is expensive and time-consuming to diagnose and repair. Productivity and process also suffer with faulty equipment or unscheduled outages. The new Amprobe DM-5 Power Quality Analyzer allows you to easily and quickly discover the source and magnitude of power quality issues.

At half the size of previous models, the compact DM-5 brings speed and efficiency to power quality jobs ranging from routine maintenance to in-plant troubleshooting of individual machinery and power distribution panels. Built for use in even the largest facilities, the DM-5 is safety tested to meet the world's most prestigious safety standards and is rated to CAT IV 300 V, CAT III 600 V, CAT II 1000 V.

- Feature packed Software Quickly analyze your recorded data to identify potential issues with data visualization. See how data relates between different visualizations.
- Simultaneously measures power, harmonics, waveform, power quality (voltage: 3-channel, current: 4-channel)
- Measures single and three-phase power system with 10 selectable wiring connection settings
- Test parameters voltage, current, active/reactive/apparent power, PF and frequency all on one screen
- Quick start mode, wiring check and auto current sensor detection for quick, accurate measurements
- Automatic recording with memory for up to 1,000 parameters at user defined intervals
- Includes thin flex current sensor with user selectable input ranges of 300 A, 1000 A, or 3000 A
- Energy consumption check: Trend and demand graphs for easy view
- Power quality events: Swell, Dip, Interruption, transients, Inrush current, and flicker
- Real-time remote monitoring on compatible PC and Android devices via Bluetooth communication
- Comes complete with measurement accessories, PC software, and large carrying case



DM-5 Power Quality Analyzer
Order No. 4724171

★★★★★
Top Rated

"Love the color Display"

"It has saved me countless hours."

"I use this tracer when I am investigate problems with light poles in several HOAs in the area. I am very happy with the performance of this tool. It allows me to quickly attach to the light pole and tracer out where panels are located and the directions of where the circuits are going."

- DM-5 customer reviews

100% of customers who reviewed this product also recommend it.



CT-53 Flex Current Sensor
(Included with DM-5)

Order No. 4726219



DM-5 Power Quality Analyzer	
Wiring connection	1P2W, 1P3W, 3P3W, 3P4W
Measurements and parameters	Voltage, current, frequency, active power, reactive power, apparent power, active energy, reactive energy, apparent energy, power factor (cos φ), neutral current, demand, harmonics, quality (swell/dip/interruption, transients/overvoltage, inrush current, unbalance rate), capacitance calculation for PF correction unit, flicker
Voltage (rms)	Range: 600.0/1000 V Accuracy: ±0.2% + 0.2%f.s.(sine wave, 40 Hz to 70 Hz) Allowable input: 1% to 120% of each range (rms). 200% of each range (peak) Display range: 0.15% to 130 % of each range Crest factor: 3 or less, Sampling speed of voltage transient: 24 μs, Input impedance: approx. 1.67 MΩ
Current (rms)	Accuracy: ±0.2% + 0.2%f.s. + accuracy of flex current sensor (sine wave, 40 Hz to 70 Hz) Allowable input: 1% to 110% of each range (rms). 200% of each range (peak) Display range: 0.15% to 130 % of each range Crest factor: 3 or less, Input impedance: approx. 100 kΩ
Swell/dip/interruption	Range: same as Voltage (rms) Accuracy: ±1.0% of nominal voltage Threshold value: In percentage of nominal voltage value
Power and energy	CT-53 flex current sensor (3-ch): max. 6000 kW CT-500 flex current sensor (1-ch): max. 1000 kW Active power accuracy: ±0.3% + 0.2%f.s. + accuracy of flex current sensor (PF 1, sine wave, 40 Hz to 70 Hz) Influence of power factor: ±1.0% (PF 0.5, 40 Hz to 70 Hz) Wh: 0.00000 mWh to 9999.99 TWh, VAh: 0.00000 VAh to 9999.99 TVAh, varh: 0.00000 varh to 9999.99 Tvarh
Power factor	Display range: -1.000 to 0.000 to 1.000 Accuracy: ±1dgt against each calculated value (for sum: ±3dgt)
Harmonics	Harmonics order (n): 1 to 50th Inter-harmonics order (n): 1 to 50th Volts: 0.0% to 100.0%, accuracy (≥3% at 100 V nominal voltage): ±10% accuracy (<3% at 100 V nominal voltage): ±0.3% of nominal voltage accuracy (1000 V range): ±0.2% + 0.2%f.s. Amps: 0.0% to 100.0%, accuracy (≥10% to max. input range): ±10% + flex current sensor. accuracy (<10% to max. input range): ±1.0% + flex current sensor Watts: 0.0% to 100.0%, accuracy: ±0.3% + 0.2%f.s. + accuracy of flex current sensor (PF 1, sine wave, 50/60 Hz) THD: 0.0% to 100.0%, Phase angle: 0.0 ° to ± 180 °
Flicker	Displayed items: Pst(1min), Pst, Plt, Max Pst, Max Plt, V, time left Measurement method: Complied with IEC 61000-4-30 and IEC 61000-4-15 Ed.2 Accuracy: Pst (max.20): ±10% according to IEC 61000-4-15
Unbalance	Volts: 0.00% to 100.00%, accuracy: ±0.3% at 50/60 Hz, sine wave (0.00% to 5.00% according to IEC 61000-4-030) Current: 0.00% to 100.00%
Transient	Approx. 40.96 ksp/s (every 2.4 μs) Range: 50 V to 2200 Vdc Accuracy: ±0.5% at 1000 Vdc
Inrush current	Range: same as Current (rms) Accuracy: ±0.4% + 0.4%f.s. + accuracy of flex current sensor Threshold value: In percentage of the measurement range
Capacitance	Range: 0.000 nF to 9999 F, 0.000 kvar to 999 kvar

INCLUDED: Test leads with alligator clips (4), US power cord, CT-53 flex AC current clamp, CT-500 flex AC current clamp, SD card, user manual, PC software, batteries

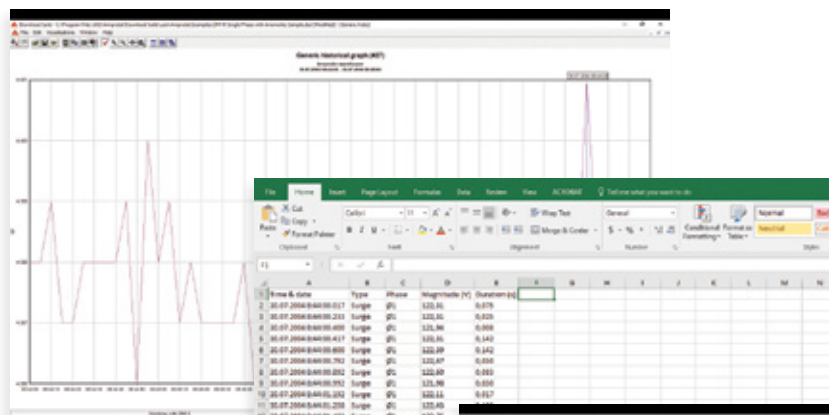




Full analysis with easy to use software Download Suite 3.0.1.1

Quickly analyze your recorded data to identify potential issues with customizable data visualizations with Download Suite 3.0.1.1.

**Graph peak energy demand
See data over an extended time frame.**
Using the historical graph, you can graph peak energy demand. Zoom in and out to see the data in different views.



**Copy and paste raw data and charts
Download Suite 3.0.1.1 allows you to copy and paste data and graphs easily.** Simply export raw data into an excel document or copy and paste graphs to print.

**Visualize data measurements separately and together
See how data relates between different visualizations,** view many different visualizations at once with **Download Suite 3.0.1.1.** Hovering the cursor above a certain time period in one visualization will cause the other visualizations to indicate the corresponding measurements automatically.

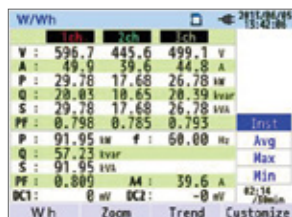


Viewing Measurements on the DM-5

Press the indicated buttons to view real time readings. You can do this before, during or after recording.

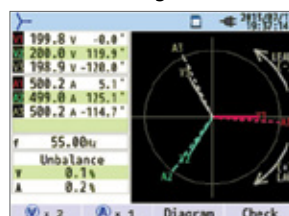
Inst/Integration/Demand

- Display average/min/max instantaneous values of current/voltage/active power/apparent power/reactive power
- View integration values by switching screens
- Check demand values with the preset target



Vector and Wiring Check

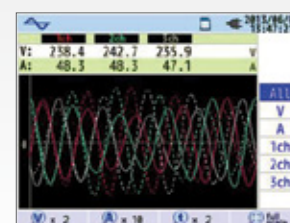
- Read vectors of voltage and current per CH on a large, color LCD screen
- Perform wiring checks



Configure advanced functions such as nominal voltages and transient limits or check for available memory by pressing the SET UP button

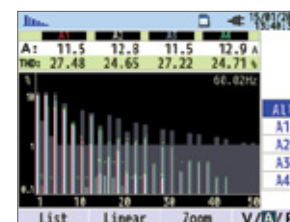
Waveform

Read waveforms of voltage and current per CH with a colored graph



Harmonic Analysis

Read harmonic components of voltage and current per CH with a colored graph



AMB-45 Digital Insulation Tester

Test insulation of wires, cables, transformers and electrical motors quickly and easily with this rugged tester.



AMB-45 Digital Insulation Tester
Order No. 2731024

- Quickly test insulation of wires, cables, transformers and electrical motors
- Includes test leads and PC software
- Selectable test voltages 250 V, 500 V and 1000 V
- Programmable timer to perform the dielectric absorption ratio test
- Sensitive ohmmeter for checking resistance of motor windings
- Built-in voltmeter
- Data logging capabilities
- Download data to PC

	AMB-45
Insulation resistance (250 V DC)	4.000 MΩ, 40.00 MΩ, 400.0 MΩ, 4000 MΩ
Insulation resistance (500 V DC)	4.000 MΩ, 40.00 MΩ, 400.0 MΩ, 4000 MΩ
Insulation resistance (1000 V DC)	4.000 MΩ, 40.00 MΩ, 400.0 MΩ, 4000 MΩ
Low resistance	400.0 Ω, 4000 Ω
Voltage AC/DC	600.0 V

INCLUDED: Test leads, user manual, batteries (installed), carrying case, software & download cable



★★★★★
Top Rated

“very versatile and cost effective”

“As a generator sales and service company, it is imperative that we are able to perform testing of our customers generator windings. The Amprobe AMB-45 does this and much more in a cost effective platform. I would recommend this to companies such as ours.”

- **AMB-45 customer reviews**

Recommended Accessories

See pg. 60-64 for details about accessories.

AMB-45-CABLE USB to 3.5mm male connector communication cable

Order No. 4251767



AMB-25 Digital Insulation Tester
Order No. 2730991

AMB-25 Digital Insulation Resistance Tester

Quality tools don't have to be expensive. This affordable, rugged megohmmeter is fast and easy to use while offering features you need for most insulation test applications including wires, cables, transformers and motors.

- Selectable test voltages up to 1000 V
- Button lock for Dielectric Absorption Ratio (DAR) test
- Sensitive ohmmeter for checking resistance of motor windings
- Internal memory stores up to 9 readings

	AMB-25
Insulation resistance (250 V DC)	40.00 MΩ, 400.0 MΩ
Insulation resistance (500 V DC)	400.0 MΩ, 1000.0 MΩ
Insulation resistance (1000 V DC)	400.0 MΩ, 2000.0 MΩ
Low resistance	999.9 Ω

INCLUDED: Test leads, user manual, batteries (installed)



AMB-50, AMB-55 and AMB-110 Industrial High Voltage Insulation Resistance Testers

Professional insulation diagnostics, automated calculations and step voltage testing to satisfy the most demanding applications. Accurately test cables, transformers, motors, surge arrestors and generators in noisy environments such as high voltage switch yards. Built-in noise rejection filters and shielded test leads provide high EMI immunity.

- Use one tester for low and high voltage systems with selectable test voltages:
 - AMB-50: 500 V, 1000 V, 2500 V and 5000 V
 - AMB-55: 250 V to 5000 V with 25 V increments
 - AMB-110: 500 V to 10,000 V with 25 V increments
- R(t) graph plots resistance in real-time to illustrate a response to the applied voltage
- Programmable timer
- Automatic discharge of test object after measurement is complete
- Measure and display all parameters simultaneously on large LCD
- Fast charging and testing
- Dual power source: receptacle or rechargeable batteries (AMB-55 and AMB-110)
- Built-in memory stores up to 1000 measurements with time and date
- Record and manage measurement data with PC Software via either RS232 or USB



AMB-50 5000 V Insulation Resistance Tester
Order No. 3730288



AMB-55 5000 V Advanced Insulation Resistance Tester
Order No. 3730320



AMB-110 10,000 V Insulation Resistance Tester
Order No. 3730335

	AMB-50	AMB-55	AMB-110
Insulation Resistance	0.5 MΩ → 20 GΩ, 2 MΩ → 40 GΩ, 5 MΩ → 100 GΩ, 100 MΩ → 1000 GΩ	0 Ω → 999 kΩ, 1.00 Ω → 9.99 MΩ, 10.0 MΩ → 100.0 MΩ, 1.00 Ω → 9.99 GΩ	
Test Voltage and Step Voltage Display Range	0 V → 5000 V	0 V → 5500 V	0 V → 10000 V
Current Display Range	0 mA → 1.2 mA	0.00 nA → 9.99 nA, 10.0 nA → 99.9 nA, 100 nA → 999 nA, 1.00 μA → 9.99 μA, 10.0 μA → 99.9 μA, 100 μA → 999 μA, 1.00 mA → 5.50 mA	
Dielectric Absorption Ratio (DAR)	0 → 9.99	0.01 → 100.0	
Polarization Index (PI)	0 → 9.99	0 → 100.0	
Dielectric Discharge Test (DD)	0 → 9.99	0 → 100.0	
Leakage Current Display Range	1 mA → 1.2 mA	0 mA → 5.50 mA	
External Voltage Measurement	30 V → 600 V	0 V → 600 V	
Capacitance Measurement	–	0 nF → 99.9 nF, 100 nF → 999 nF, 1 μF → 50.0 μF	
Download PC Interface	•		•
Memory Size	18 Measurements		128 kB

INCLUDED: Test lead, large jaw alligator clips, batteries, user manual, carrying case, software, RS-232 cable (AMB-55, AMB-110 only), USB cable



Recommended Accessories

See pg. 60-64 for details about accessories.



AMB-50-KIT1 Test Leads for AMB-50 (Replacement Part)
Order No. 4091293

AMB-KIT1 Test Lead Set (Replacement Part)
Order No. 4091316

AMB-KIT2 10 KV shielded lead with tip for AMB-110 (Replacement Part)
Order No. 4227515



★★★★★ Top Rated

“All the required tests can be done with this product”

“Measurement of dielectric discharge has importance in the measurement of insulation resistance, it’s really a diagnostic insulation tester.”

- **AMB-110 customer reviews**

GP-2A Ground Resistance & Resistivity Tester

For installation and troubleshooting, this instrument provides accurate and reliable measurements of ground resistance and soil resistivity to help you reduce power quality problems.

- Measures earth ground resistance with 3-point (fall of potential) or 2-point tests
- Calculates resistivity with 4-point test
- Automatic voltage measurement prevents false measurements
- Autoranging
- Store up to 999 measurements
- Create custom reports by downloading data to a PC

	GP-2A
Ground Resistance	1999 Ω
Ground Resistivity	314 kΩm
AC Current	-
AC Voltage	0 V – 460 V

INCLUDED: User manual, batteries (installed), connection cables, 4 ground stakes, PC software and USB cable, carrying case



GP-2A Earth Ground Tester
Order No. 4129187



DGC-1000A Clamp-On Ground Resistance Tester
Order No. 2731217

DGC-1000A Clamp-on Ground Resistance Tester

User-friendly and accurate, the DGC-1000A helps you work safely without test leads or auxiliary electrodes. The on-board memory and data logging features improve efficiency.

- Accurate ground resistance measurements from 0.025 to 1500 Ohms
- True-rms current and leakage current measurements
- Accurate readings in less than 10 seconds
- Audible alert if continuity beep if the resistance is below 40 Ohms
- Data logging capability - 116 records
- Individual data point recordings
- User selectable high and low ohm audible alerts
- Auto power-off (can be disabled)
- Low battery indicator

	DGC-1000A
Ground Resistance	0.025 Ω → 1500 Ω
Ground Resistivity	-
AC Current	0.2 mA → 30.00 A
AC Voltage	-

INCLUDED: Carrying case, user manual, resistance calibration plate, batteries (installed)



Electrical Testers

SAFETY - Use Amprobe tools with confidence. Our tools are tested by Amprobe and certified by UL and other regulatory groups around the world. Amprobe tools are proven performers that protect you and your equipment.



PRM-6 Phase Sequence and Motor Rotation Tester

INSP-3 Wiring Inspector

Verify in seconds whether a building's wiring complies with electrical code. Save time and money by testing more efficiently and identifying issues crucial to the safety and performance of an electrical system.



INSP-3 Wiring Inspector
Order No. 3503207

- Large display shows all relevant test data, no scrolling or switching screens needed
- Find faulty wiring that needs repair without removing outlet cover plates or panel covers, including:
 - Faulty splices and connections
 - Incorrect wiring
 - Undersized wiring
 - Faulty or incorrectly wired AFCIs/GFCIs
 - Incorrect line voltage
 - Poor ground quality
- Verify performance of electrical systems with user selectable 10, 15 and 20 amp loads
- Flashing screen clearly indicates incorrect wiring or voltage drop test failure
- Test without tripping circuit breakers or blowing fuses
- Check grounding for safety and ability to support sensitive electronic equipment

	INSP-3	BEST ACCURACY
Load	Constant 10, 15 or 20 amp simulation regardless of line voltage	–
Operating Voltage	95 V AC → 120 V AC	± 2% + 2 LSD
GFI Trip	6.0 mA nominal to trip GFI, 30 mA to trip RCD	–
AFCI Trip	Up to 8, 120 AMP pulses within 1/2 second period	–



INCLUDED: Power cord, battery (installed), user manual, carrying case

★★★★★
Top Rated

"Great tool must have for service electricians"

"This is a great tool that is easy to use, very intuitive, works great for double checking faulty breaker's and leaving you and your customers with confidence that you found and resolved the problem."

- INSP-3 customer reviews

ST-101B/ST-102B Socket Testers

Easily check and confirm proper wiring of electrical receptacles with the Amprobe ST-101B and ST-102B Receptacle Testers. Quickly test sockets and confirm wiring and operation of AC outlets with the ST-101B and confirm that GFCI breakers are properly wired for protection with the ST-102B.

- Confirm proper wiring and operation of AC socket
- Easy-to-read lights indicate common wiring problems
- The trip test to confirm that GFCI protection is working properly (ST-102B only)
- For use on 110-125 V AC

	ST-101B	ST-102B
AC Voltage	110 V → 125 V	110 V → 125 V
GFCI	–	•



ST-101B Socket Tester
Order No. 4160800



ST-102B Socket Tester
Order No. 4160817



INCLUDED: Instruction sheet

TIC 300 PRO High Voltage Detector

Rugged and reliable for utility, industrial, heavy manufacturing and mine safety applications, the Amprobe TIC 300 PRO with VolTect™ detects voltages in low, medium and high voltage applications with bright visual and loud audible alerts.

- Utility tool for checking transmission lines, power distribution equipment, down power lines, fuses and load break connectors
- Lower voltage setting for checking voltage presence in breaker panels, breakers, power outlets and wiring
- Verifies presence of voltage from 30 V AC to 122,000 V AC (122 kV)
- MSHA certified and intrinsically safe
- Push button functionality for ease of use with PPE gloves
- Visual and audible voltage indication
- Self-test verifies tester works properly
- Ergonomic design with a convenient handle
- Drop-proof to 6' (1.8 m)

	TIC 300 PRO	TIC 410A
VolTect™ Non-Contact Voltage Detection	30 V AC → 1500 V AC 1500 V AC → 122,000 V AC (with Hot Stick TIC 410A)	-
Voltage	-	Up to 121 kV

INCLUDED: CC-300 PRO carrying case, user manual, batteries (installed)



Best Seller

TIC 300 PRO High Voltage Detector
Order No. 3467441

TIC 410A Hot Stick (33" length extends to 57")
Order No. 3107749

★★★★★
Top Rated

"Definitely fulfilled my expectations"

"The product works great & has greatly helped out the plant electricians in verifying that a circuit is electrically safe."

- TIC 300 PRO customer reviews

Is it Hot or Not?

Why utility crews trust the Amprobe TIC 300 PRO

Feedback from a major US utility and the 30 underground crews who serve a North American city

In every truck, on every trouble call, there's one tool crews reach for first to ensure their safety: the TIC 300 PRO. It's the go-to tool for underground crews servicing secondary power lines for a large Northeastern US utility company. Approximately three hundred TIC PRO 300 tools are currently in use throughout their system.

The crew's work takes them down manholes under historic cities where the infrastructure is aging, and the problems are frequent. Whether they're working on 120 V, 240 V or 5 kV or greater, on cables, transformers, or switches, they begin each job by checking for live power with the TIC 300 PRO non-contact voltage detector. Every crew carries at least one unit and they use it daily, often

multiple times each day.

Lights flash and the TIC 300 PRO beeps with increasing frequency as it nears a source of electricity, leaving technicians no doubt whether the source is live or not.

The crews like how simple the TIC 300 PRO is to use even with heavy gloves and full PPE on. They push one button to turn the unit on, another to select low or high range setting. After two decades of using TIC product line, the crews know it, trust it, and feel safe – it is exactly what they need.

Recommended Accessories

See pg. 60-64 for details about accessories.

TIC 410A

Hot Stick for the TIC 300 PRO
Safely check voltages up to 122 kV with the Hot Stick and the TIC 300 PRO. Hot stick is 33" and extends to 57".



CC-300 PRO Carrying Case

(Replacement part)

Order No. 3467429



MO-100 Milliohmmeter

Spot potential failures fast with the portable, battery powered MO-100. Check for opens or shorts in motor windings, generators and transformers. Test heating elements and wire-to-wire resistance in critical electrical connections.

- Accurate four terminal measurement down to 100 $\mu\Omega$ without test leads resistance compensation
- Three test currents with over-temperature protection for measurement precision
- Protection against inadvertent connection to overvoltage
- Potential lead resistance, current lead resistance checks
- Indicates measurement errors due to temperature or connection problems
- Auto-hold and auto-off features
- Lightweight, robust and compact
- "O-Ring" sealed enclosure



MO-100 Milliohmmeter
Order No. 3474954

MO-100	
Measuring Ranges	0 → 200.0 m Ω in steps of 100 $\mu\Omega$ 0 → 2000 m Ω in steps of 1 m Ω 0 → 20.00 Ω in steps of 10 m Ω 0 → 200.0 Ω in steps of 100 m Ω 0 → 2000 Ω in steps of 1 Ω
Test Current	1 mA (2000 Ω range) 10 mA (20 Ω /200 Ω ranges) 100 mA (200 m Ω /2000 m Ω ranges)

INCLUDED: User manual, test leads, batteries (installed)



9.8" (L) x 7.5" (W) x 4.3" (D)
(250 mm x 190 mm x 110 mm)

Recommended Accessories

See pg. 60-64 for details about accessories.



MO-100-LEADS
Replacement Test Leads
Order No. 4160798

PK-110 Electrical Test Kit

Amprobe's PK-110 Electrical Test Kit offers three electrical testers with testing functions suitable for a variety of residential applications. The kit includes the AM-420 Digital Multimeter, ST-102B Socket Tester with GFCI and VP-1000 Non-Contact Voltage Detector. From identifying voltage presence in outlets and switches to confirming proper wiring of regular and GFCI protected outlets, the PK-110 kit boasts all the features needed to perform quick and safe electrical tests.

AM-420 Digital Multimeter

- AC/DC voltage
- DC current
- Resistance
- Audible continuity and diode test
- Battery Test (1.5 V and 9 V)
- Data hold



VP-1000 Non-Contact Voltage Detector

- AC voltage detection
- Visual voltage Presence alert



ST-102B Socket Tester with GFCI

- Tests standard and GFCI outlets
- Verifies proper wiring
- Detects five different wiring faults
- CSA listed for safety



	AM-420	VP-1000	ST-102B
AC Voltage	200.0/250 V	–	–
DC Voltage	200 mV 2.000/20.00/200.0/250 V	–	–
Operating Voltage	–	90 V AC → 1000 V AC, 50/60 Hz	110 – 125 V AC, 50 – 60 Hz

INCLUDED: User manuals for AM-420, VP-1000 and ST-102B, all batteries (installed)

PK-110 Electrical Testing Kit
Order No. 4394419

PRM-6 Phase Sequence and Motor Rotation Tester

The PRM-6 Phase Sequence and Motor Rotation Tester can test the motor rotation of 3-phase systems and verify 3-phase receptacle wiring and phase sequencing with test leads. An additional advanced feature is wireless motor rotation detection, which senses motor rotation direction without use of test leads, particularly useful for fast-running motors when the motor rotation cannot be visually determined or when the drive shaft is not visible. The PRM-6 is an essential tool for motor rotation and phase sequence testing in commercial and industrial environments on electrical systems up to 700 V.

- 3-phase wire sequence indication
- Synchronous or asynchronous motor rotation direction
- Error displays (missing phase, one input connected to neutral or PE)
- Non-contact, wireless motor rotation detection on running motors
- Indicates motor rotation of disconnected motors when spinning the shaft by hand or other means
- 3-phase to phase voltage up to 700 V
- Clear backlit LCD display with easy to read symbols
- Durable, rubber casing for 3 ft (1 m) drop-proof protection

	PRM-6
3-Phase indication and open-phase check	LCD
Phase rotation detection	Voltage range (frequency): 40 – 700 V (16 – 60 Hz) 50 – 700 V (60 – 400 Hz) Nominal test current: < 3.5 mA
Non-contact, wireless motor rotation detection	Frequency range: 16 – 400 Hz
De-energized motor rotation test	Voltage range: ≥ 1 V – 700 V Frequency range: 2 – 400 Hz

INCLUDED: Test leads (3), test probes (3), alligator clips (3), user manual, carrying bag, batteries



PRM-6 Phase Sequence and Motor Rotation Tester
Order No. 4375950

Recommended Accessories
See pg. 60-64 for details about accessories.



TL-PRM-6
Test Leads set for PRM-6 (replacement set)
Order No. 4692870

VP-1000SB Non-contact Voltage Detector

Designed for safe and convenient, non-contact AC voltage detection without interruption to electrical systems, the VP-1000SB provides 3-way visual, audible and vibration alerts when AC voltage is present.

- Designed to discern between hot and neutral wires up to CAT IV 1000 V AC
- Safety rated for indoor and outdoor applications
- Test for AC voltage cables, circuit breakers, wall sockets, junction boxes, and fuses

	VP-1000SB
AC Voltage Detection	90 → 1000 V AC, 50/60 Hz
Voltage Indication	Red LED, buzzer, vibration

INCLUDED: User manual, batteries (installed)



VP-1000SB Non-Contact Volt Detector
Order No. 4160821

VP-440 Non-contact Volt Probe®

Designed for safe, non-contact voltage detection, this voltage probe doesn't require much budget or demand much space. It fits conveniently in a shirt pocket, tool belt or pouch.

- Safely check for AC voltages without disconnecting the electrical loads
- Test cables, circuit breakers, wall sockets, junction boxes, and fuses
- Completely insulated, with no exposed metal or conductive parts
- No current flow is needed for correct operation

	VP-440
AC Voltage Detection	100 V → 1000 V AC, 50/60 Hz
Voltage Indication	Red LED

INCLUDED: User manual, batteries (installed)



VP-440 Non-Contact Volt Probe
Order No. 2734332

PY-1A Voltage Tester

The PY-1A Voltage pocket-sized voltage tester detects AC and DC voltage ranges on cables, circuit breakers, wall sockets, junction boxes and other electrical wiring through direct contact.



PY-1A Voltage Tester
Order No. 3503229

- Neon lights indicate AC voltage at 120, 240, 277, 480 V and DC voltage at 160, 330, 380, and 600 V
- For use on energized or non-energized circuits
- Simple one hand operation, no buttons or setup required
- Test leads store conveniently in back of unit, properly spaced for outlet testing

PY-1A	
AC Voltage	120 V, 240 V, 277 V, 480 V
DC Voltage	160 V, 330 V, 380 V, 600 V

INCLUDED: User manual



★★★★★
Top Rated

“Ease of operation and convenience”

“Easy to read voltage display, probe securing, and convenient size.”

- PY-1A customer reviews

LAN-1 Lan Cable Tester

With quick go/no-go tests, you can find opens, shorts and miswired cable installations. Step through the test cable one at a time or let the unit automatically pulse through the pin-outs and display the results.



LAN-1 Lan Cable Tester
Order No. 3052401

- Remote termination module tests installed cable on wall plate or patch panels
- Buzzer sound warns for error condition in cable
- Two sets of LED lights indicate source and test
- Perform loopback or remote tests
- Maximum line length: 328 yards (300 m)

LAN-1	
Cable Types Tested	10/100 base-T; 10 base-2; RJ45; AT&T 258A; EIA/TIA 568A/568B; Token Ring
Continuity Maximum Length	> 300 meters
Connector Types	RJ45, BNC

INCLUDED: User manual, batteries (installed), remote terminator, RJ45 to female BNC cable, RJ45 to male BNC cable, RJ45 to RJ45 cable, Female BNC to Female BNC cable



★★★★★
Top Rated

“Ease of use”

“The tester was easy to use and worked very well in the field; it made the job a lot more easy. I recommend this tool for the field or home.”

- LAN-1 customer reviews

NCV-1000 Series Non-Contact Voltage Probes

The NCV-1000 Non-Contact Voltage (NCV) tester series provides maximum safety and convenience for detecting AC voltage without interrupting electrical systems. Designed to conveniently fit in your shirt pocket, the NCV-1000 series performs in indoor and outdoor settings. Safety tested to the highest category measurement, CAT IV 1000 V, as well as IP65 water and dust resistant, the NCV-1000 series is fit for the toughest industrial applications.

- Detect the presence of AC voltage in cables, circuit breakers, wall sockets, junction boxes, fuses, extension cords
- Test voltage through wire insulation Identify cable breaks in wires, cords and lightning systems connected in series
- Identify polarity (line vs. neutral) of receptacles and cables
- Detect magnetic solenoid to diagnose electromagnets and relays (NCV-1040 only)



NCV-1040 Non-Contact Voltage Probe
Order No. 4918060

	NCV-1020	NCV-1030	NCV-1040
	Order No. 4918049	Order No. 4918051	Order No. 4918060
Operating Voltage Range	50-1000 V AC, 50-400 Hz		
Audible (buzzer) and visual (LED) voltage indication	•	•	•
IP65 rated water/dust resistant	•	•	•
CAT IV 1000 V safety rated	•	•	•
Built-in work light	-	•	•
NCV high sensitivity range (12 V to 50 V AC)	-	•	•
Auto power off	-	•	•
Magnetic solenoid testing	-	-	•

INCLUDED: Batteries (installed), user manual



VPC-10A and VPC-12 Non-Contact Voltage Probes

Troubleshoot voltage and continuity with easy to use testers designed for residential and commercial applications.

- Automatically selects AC voltage, DC voltage or continuity
- Bright LED lights indicate seven levels of AC and DC voltages
- Full range polarity to detect negative or positive DC voltage
- VPC-12 Only:
 - NCV Non-contact voltage detection adds an extra level of safety
 - Vibrating alert indicates the presence of dangerous voltage levels and continuity
 - Bright work light built in to take measurements in dimly lit locations

	VPC-10A	VPC-12
LED Voltage range	24...600 V AC, 6...220 VDC	
LED voltage indicators	AC volts: 24 V, 120 V, 208 V, 240 V, 277 V, 480 V, 600 V, DC volts: 6 V, 12 V, 24 V, 36 V, 48 V, 110 V, 220 V	
Frequency range	50 to 60 Hz	
Acoustic indication	≥ 24 V AC, ≥ 6 VDC	
Built-in vibration alert	-	≥ 24 V AC, ≥ 6 VDC
Hazardous voltage indication	≥ 24 V AC; ≥ 48 VDC	
Range detection	Automatic	
Polarity detection	Full range	

INCLUDED: Batteries (installed), user manual



VPC-12 Voltage and Continuity Tester with Voltect™
Order No. 4375938



VPC-10A Voltage and Continuity Tester
Order No. 4375914



Selectable °F/°C

Center-point temperature measurement

Hot and cold markers

Adjustable emissivity

Laser sighting

IRC-120
Thermal Camera
with SD card



SD card



Temperature

TARGETED - Amprobe has the tools you need as a HVAC/R, electrical, industrial maintenance, or automotive professional. The complete line of Amprobe temperature measurement tools range from infrared thermometers to specialized thermometers offering remote access to measurements.



IRC-120 and IRC-110 Thermal Cameras

Point-and-shoot thermal imaging technology for the professional

The Amprobe IRC-120 and IRC-110 thermal cameras are designed for the professional, rugged and with point-and-shoot functionality to give you a visual heat map image for quick and accurate identification of temperature related issues. Perform preventative maintenance and troubleshoot issues in electrical connections, HVAC, mechanical and automotive applications. The IRC-120 allows you to save and download photos with the included SD card. The UV light allows HVAC experts to identify potential leaks.

- Infrared heat map image blending at 0%, 25%, 50%, 75%, and 100%
- Three selectable color palettes (grey scale, hot iron and rainbow)
- Center-point temperature measurement and focus free
- IR measurement 20:1 Distance to Spot ratio
- Adjustable emissivity from 0.10 to 1.00
- Auto off function
- Selectable °F and °C
- Intuitive joystick navigation to on-screen menu and settings
- Hot and cold markers instantly identifies hottest and coldest spots

IRC-120 only:

- Capture and download thermal images with SD card
- Laser sighting helps pinpoints spot of temperature measurement
- Built-in flashlight illuminates dark areas
- UV light identifies leaks



IRC-120 Thermal Camera with SD card
Order No. 4989013

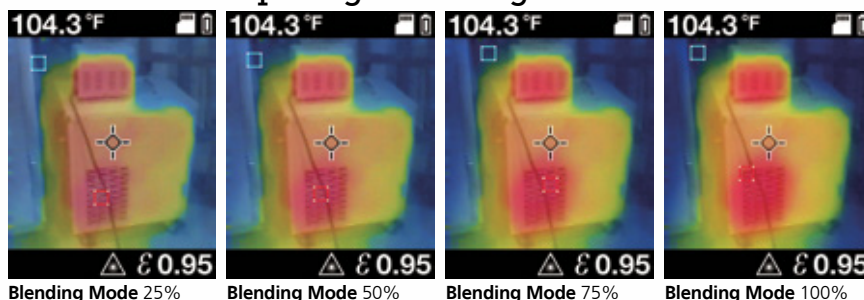


	IRC-110	IRC-120
Built-in digital camera	•	•
Infrared heat map overlay	Five blending modes: 0%, 25%, 50%, 75%, 100%	Five blending modes: 0%, 25%, 50%, 75%, 100%
Color palettes	Grey Scale, Hot Iron, Rainbow	Grey Scale, Hot Iron, Rainbow
Field of view	33 ° x 33 °	33 ° x 33 °
Focus system	Focus free	Focus free
IR temperature range	14 °F to 932 °F (-10 °C to 500 °C)	14 °F to 932 °F (-10 °C to 500 °C)
Distance to Spot ratio (D:S)	20:1	20:1
Emissivity	0.10 to 1.00	0.10 to 1.00
Display resolution	0.2 °F/0.1 °C	0.2 °F/0.1 °C
Hot and cold markers	•	•
Center point marker	•	•
Temperature units	Selectable °F/°C	Selectable °F/°C
Memory storage	-	•
Laser sighting	-	•
Flashlight	-	•
UV light	-	•
Auto power off	•	•

INCLUDED: Batteries, wrist strap and user manual
IRC-120 only: 2 G micro SD card (installed), standard SD card adapter



Infrared heat map image blending



Blending Mode 25% Blending Mode 50% Blending Mode 75% Blending Mode 100%



IRC-110 Thermal Camera
Order No. 4909782

★★★★★
Top Rated
"Great tool!"

"I've had this tool for a little over a week. I highly recommend it for the price range. It does everything it claims to do."

"This was purchased mainly for automotive diagnostics. It paid for itself after the second repair in time it saved me alone. Thanks Amprobe."

- IRC-110 customer reviews

100% of customers who reviewed this product also recommend it.



IR-700 Series Infrared Thermometers

The Amprobe IR-700 Series Infrared Thermometers offer five options, all featuring precision performance and unparalleled accuracy and response time. Specifically designed for HVAC/R, electrical, industrial maintenance, automotive as well as quality control and fire prevention applications.

- Distance to Spot ratio up to 50:1
- Wide temperature ranges
- Adjustable emissivity for measuring a variety of materials (IR-720, IR-730, IR-750)
- Min/max memory
- USB interface, data storage and thermocouple input (IR-750)



IR-750 50:1 Infrared Thermometer
Order No. 4109594

Recommended Accessories

See pg. 60-64 for details about accessories.

EPS-700
External Power Supply for IR-750 (optional accessory)
Order No. 4160685



	IR-708	IR-710	IR-720	IR-730	IR-750
Distance to Spot (D:S)	8:1	10:1	20:1	30:1	50:1
Temperature Range	0 °F to 716 °F -18 °C to 380 °C	0 °F to 716 °F -18 °C to 380 °C	-26 °F to 1922 °F -32 °C to 1050 °C	-26 °F to 2282 °F -32 °C to 1250 °C	-58 °F to 2822 °F -50 °C to 1550 °C
Best Accuracy	±2% (Typical)	±2% (Typical)	±1.8% (Typical)		
Emissivity	0.95	0.95	Adjustable from 0.10 to 1.00		
Display Resolution	0.1 °C/0.1 °F				0.1 °C/0.1 °F of reading < 999.9
Backlit dual LCD display	•	•	•	•	•
Auto display and MIN/MAX Memory	•	•	•	•	•
DIF/AVG Temperature Display	-	-	•	•	•
Tripod mount	-	-	•	•	•
Programmable high and low alarm	-	-	-	-	•
USB cable	-	-	-	-	•
Built-in memory	-	-	-	-	99
K-type thermocouple measurement	-	-	-	-	•

INCLUDED: Battery (installed), user manual, carrying case: IR-720, IR-730, IR-750
IR-750 only: K-type thermocouple, USB cable and software CD



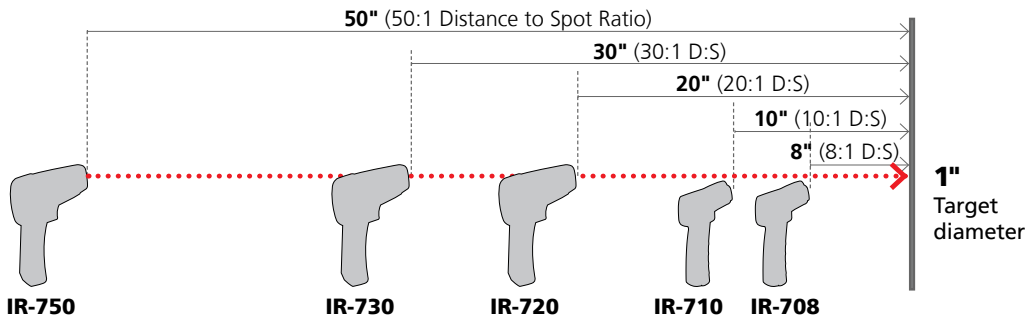
★★★★★
Top Rated

“Excellent high temperature IR probe”

“I needed an accurate probe that would give me the temperature of the molten iron we were producing in a chemical reaction. This has done very nicely for this task.”

- IR-750 customer reviews

100% of customers who reviewed this product also recommend it.



Distance to Spot Ratio

The larger the Distance to Spot (D:S) ratio, the better the resolution and the smaller the area that can be measured. The IR-750 with a D:S of 50:1, will measure a 1" diameter at a distance of 50" away, perfect for demanding quality and process control applications.



IR-450 Infrared Pocket Thermometer and Laser Pointer

A must have tool for everyday applications, the IR-450 3-in-1 Infrared Pocket Thermometer, Laser Pointer, and Flashlight offers a uniquely small and convenient form factor with professional 8:1 distance to spot ratio. More portable than traditional infrared thermometers, quickly check temperatures in HVAC/R, fire safety and protection, industrial maintenance, automotive and quality control applications.

- 8:1 Distance To Spot (D:S) ratio
- Bright laser pointer
- Built-in LED flashlight to illuminate dark areas
- Holds temperature reading (selectable °F/°C) for ten seconds

	IR-450
Range	-22 °F → 932 °F (-30 °C → 500 °C)
Distance to Spot Size	8:1 ratio
Best Resolution	0.5 °F (0.2 °C)
Best Accuracy	± 4 °F (2 °C)
Emissivity	Pre-set 0.95

INCLUDED: Battery (installed), user manual, pocket clip



IR-450 Infrared Pocket Thermometer
Order No. 4918060

IR608A Infrared Thermometer with Laser Pointer

Point and press for quick and easy non-contact temperature measurement. Use this effective diagnostic tool to identify temperature for HVAC, fire safety and protection, industrial maintenance, automotive and quality control.

- Pocket-sized, ergonomic design
- Laser sighting for accurate targeting (CE EN60825 certified Class II)
- Display hold
- Fast response time
- Backlight display for visibility in a variety of working conditions
- Low battery indicator

	IR608A
Range	0 °F → 750 °F (-18 °C → 400 °C)
Distance to Spot Size	8:1 ratio
Best Resolution	0.5 °F (0.2 °C)
Best Accuracy	± 2% of reading or ± 3.5 °F (± 2 °C) whichever is greater
Emissivity	Pre-set 0.95

INCLUDED: Battery (installed), user manual



NCV-1040 Non-Contact Voltage Probe
Order No. 4918060

★★★★★
Top Rated

“Excellent tool, and easy to use.”

“This infrared thermometer is an excellent tool for on the job and at home to find heat loss at windows and doors. For use to detect heat loss and efficient use of energy. I would recommend this tool very highly to HVAC technicians and anybody that has to evaluate heat loss and efficient use of energy.”

- IR608A customer review

Best Seller



THWD-3 Relative Humidity and Temperature Meter
Order No. 3033042

THWD-3, TH-3 Relative Humidity and Temperature Meters

An exceptionally wide ambient temperature range makes these meters versatile and accurate.

- Large LCD displays two measurements simultaneously
- Extended probe stem for easy access to air ducts
- Dew point and wet bulb (THWD-3 only)
- Min/max readings
- Temperature measurement range: -4 °F (-20 °C) to 140 °F (60 °C)
- Data hold
- Capacitive sensor with protective cover
- Auto power-off

INCLUDED: Carrying case, battery (installed), user manual

TH-1 Compact Probe Style Relative Humidity Meter

Slip this little meter in your pocket and be ready for quick temperature and humidity checks.

- Displays relative humidity and temperature simultaneously
- Measure wet bulb and dew point
- Precision capacity relative humidity sensor with twistable protective cap
- Selectable °C or °F
- Stores min/max readings for comparisons
- Data hold

	THWD-3	TH-3	TH-1
	Order No. 3033042	Order No. 3027060	Order No. 3311871
Temperature – Internal Sensor	-4 °F → 140 °F (-20 °C → 60 °C)		-44 °F → 122 °F (-20 °C → 50 °C)
Relative Humidity	5 → 95%		10 → 95%
Dew Point Temp	•	–	•
Wet Bulb Temp	•	–	•

INCLUDED: Carrying case, user manual, battery



TH-1 Compact Probe Relative Humidity Meter
Order No. 3477302

THWD-5 Relative Humidity and Temperature Meter with Wet Bulb and Dew Point

Designed for HVAC technicians and plant maintenance engineers, this microprocessor-based psychrometer provides quick, easy access to wet bulb and dew point values as well as temperature and relative humidity.

- Extended probe for easy access to targets
- Large digital dual display with backlight makes readings easy-to-see
- Temperature with 0.1 degree resolution in °F or °C, front panel selectable
- Stores min/max measurements
- Data hold freezes last reading
- Tripod mountable

THWD-5	RANGE	BEST ACCURACY
Relative Humidity	0% → 100%	± 3% from 10% → 90% (at cal temp) ± 5% for other
Temperature	14 °F → 140 °F (-10 °C → 60 °C)	± 0.6 °C (± 1 °F)
Dew Point Temp	-100.0 °F → 139.8 °F (-73.4 °C → 59.9 °C)	-
Wet Bulb Temp	7.88 °F → 139.8 °F (-13.4 °C → 59.9 °C)	-

INCLUDED: Carrying case, user manual, batteries (installed)



THWD-5 Relative Humidity and Temperature Meter
Order No. 3311803



TMD-56 Thermometer

The professional choice for HVAC technicians, electricians and research, industrial process, and quality control applications, this thermometer offers dual inputs for easy super-heat and sub-cool temperature measurements. Monitor and track temperatures, the multi-logging thermometer features real-time clocks with a calendar, user-selectable recording intervals, and easy data recall using up and down keys.

- °F/°C selectable
- Dual input: T1, T2, T1-T2
- Audible alert with Hi/Lo settings for out-of-range measurements
- Min/max with elapsed time, average, relative, hold functions
- Time and relative settings
- In-field thermocouple offset adjustment
- Robust holster protects the instrument
- Auto power-off saves batteries
- Download data to PC via USB
- Data capture: 256 samples with real-time data
- Data logging: 16 sets, maximum 16,000 data points
- Thermocouple offset adjustment
- Record, max, min, max-min, average, relative zero and hold functions
- Audible alerts with Hi/Lo setting
- Resolution 0.1 °F/1 °F (0.1 °C/1 °C)

	TMD-56	Thermocouple Type	Temperature Range
Thermocouple Type	K	K-TYPE	-328 °F → 2501 °F (-200 °C → 1372 °C)
Basic Accuracy	0.05%	J-TYPE	-346 °F → 2192 °F (-210 °C → 1200 °C)
Number of Parameters on the Display	3	T-TYPE	-328 °F → 752 °F (-200 °C → 400 °C)
Real Time Clock - Wireless Beeper with Setting	•	E-TYPE	-346 °F → 1832 °F (-210 °C → 1000 °C)
Data Capture	256 Samples	R-TYPE	32 °F → 3212 °F (0 °C → 1767 °C)
Data Logger	16000 Points	S-TYPE	32 °F → 3212 °F (0 °C → 1767 °C)
PC Interface	USB	N-TYPE	-58 °F → 2372 °F (-50 °C → 1300 °C)

INCLUDED: USB cable and software, user manual, 2 K-type thermocouples, batteries (installed)



TMD-56 Thermometer
Order No. 3730138

TR200-A Temperature/Relative Humidity Data Logger

One compact unit monitors both temperature and humidity and records it on your PC using the USB interface. Amprobe software included.

- Record sample interval timing, start/stop, date, time, Hi/Lo alarm threshold, and units
- Visible LED warnings alert you to air quality problems
- IP-65 rating for dust and moisture
- Wall mountable

INCLUDED: Batteries (installed), user manual, PC software CD and USB cable



TR200-A Temperature Relative Humidity Data Logger
Order No. 3477302

TR300 Temperature/Relative Humidity Data Logger

Wall-mountable, self-standing, or tripod mountable, this data logger configures to your application.

- Temperature, relative humidity, dew point or web bulb measurements with real-time date/hour stamp
- Audible and visual alerts help you monitor IAQ conditions
- Stores up to 16,000 readings
- Records data to a PC with USB cable and Amprobe software included
- Programming on-screen or from the PC

	TR200-A	TR300
Dual Display LCD	-	•
Air Temperature Reading	14 °F → 140 °F, (-10 °C → 60 °C)	-4 °F → 158 °F, (-20 °C → 70 °C)
Temperature Accuracy	± 1 °F (± 0.6 °C)	± 1 °F (± 0.6 °C)
RH Reading	0.0 to 99.9%	0 to 100%
RH Accuracy	± 3% at 77 °F (25 °C)	± 3% from 10 - 90%
Recording	16000	16000
Dew Point Reading	-	•
On Screen Programmable	-	•
Software Programmable	•	•

INCLUDED: Batteries (installed), user manual, PC software CD, USB cable



TR300 Temperature Relative Humidity Data Logger
Order No. 3311844





External temperature probe

Maximum wind speed display ... >

Measures air velocity, temperature and ambient temperature ... >

Selectable wind units: mph, ft/m, Knt, m/s, km/h, BF

TMA5 Mini Vane Anemometer

Environmental Testers and Leak Detectors

PRECISION - High quality tools designed to save HVAC/R professionals time, money and keep buildings healthy. From simple, one-time checks to advanced instruments that measure humidity and airflow or check for gas leaks, Amprobe offers a complete line of tools designed specifically for environmental solutions.

LM-100 and LM-120 Light Meters

These portable, easy-to-use digital light meters measure interior illumination levels from fluorescent, metal halide, high-pressure sodium or incandescent sources. Switch off, reduce or increase the output level of lighting fixtures. Reduce the energy burden of the building by significantly increasing the efficiency of its lighting system.

- Measure in lux or footcandles, front panel switchable
- Simple, one-handed operation
- Silicon photodiode sensor and filter for accuracy and high-resolution
- Analog DC voltage output to operate with chart recorder or data logger (LM-120 only)
- Zero adjustment (LM-120 only)
- Auto power-off to save battery life

	LM-100	LM-120
Ranging	Manual	Automatic/Manual
Illumination Sensor	Silicon photodiode and filter	
Range Lux	20, 200, 2000, 20000, 200000	
Range Footcandles	20, 200, 2000, 20000	
Calibration Point	2854 °K Cosine Angular corrected per JIS C 1609:1993 and CNS 5119 general A class	
Data	Data hold	Data hold, min/max

INCLUDED: Batteries (installed), carrying case, user manual



LM-100 Light Meter
Order No. 3052348

LM-120 Light Meter
Order No. 3052353

LM-200LED Light Meter

This professional tester accurately measures light output of LED sources for all visible light ranges.

- Lux or footcandle measurement units, user selectable
- Data hold
- Max recording captures highest light measurement
- Measuring lights source include all visible ranges
- Accurate measurements with spectral response close to CIE luminous spectral efficiency
- Angled light cosine correction
- Extendable wire (approximately 5' (1.5 m))
- Measurements according to JISC1609:1993 and CNS 5119 general A class specifications

	LM-200LED	BEST ACCURACY
LED Light Measurement	200, 2000, 20000, 200000 lux 20, 200, 2000, 20000 footcandle	± 3% (Calibrated to standard incandescent lamp 2856° K) and corrected LED day white-light spectrum.

INCLUDED: User manual, battery (installed), carrying case



LM-200LED Light Meter
Order No. 3730217

SM-10 and SM-20-A Sound Meters

These sound meters meet the measurement needs of safety engineers, health, industrial and safety offices as well as quality control. Use them to check compliance with safety regulations and perform acoustic analysis. They use two different weighting filters required by the IEC 651 and ANSI S1.4 Type 2 for audio filtering.

- A-weighting for general noise sound level
- C-weighting for measuring sound level of acoustic material control in various environments
- Display with 0.1dB steps on a 4-digit LCD
- Slow (1 sec) and fast (125 ms) response settings to check peak and average noise levels
- PC interfaces (SM-20-A only)

	SM-10	SM-20-A
Microphone	1/2" Electret condenser microphone	
Standard Applied	IEC 651 Type 2, ANSI S1.4 Type 2	
Dynamic Range	50 dB	
Time Weighting	FAST (125 ms), SLOW (1 sec)	
Frequency Range	31.5 Hz → 8 kHz	
Measuring Level Range (Auto Range)	A-Weighting: 30 dB → 130 dB C-Weighting: 35 dB → 130 dB	
Data	Data hold	Min/max
Internal Memory	-	14000 records

INCLUDED: Carrying case, user manual, battery (installed), USB cable download and software CD (SM-20-A only)



SM-20-A Sound Meter
Order No. 3477333

★★★★★
Top Rated

"Great Product, Great Price"

"I needed a sound meter for doing PA system work to justify the additional speakers in certain areas that have a higher ambient noise. This Sound Meter gave me real numbers to present real data to my customers. The sound meter is simple, durable, and easy to use. It now a part of my regular use collection of tools."

- SM-20-A customer reviews

100% of customers who reviewed this product also recommend it.



SM-CAL1 Sound Meter Calibrator
Order No. 3052382

SM-CAL1 Sound Meter Calibrator

This instrument generates the fixed sound level signals needed to calibrate sound level meters.

- Two output levels: 94 dB and 114 dB
- Output frequency: 1000Hz
- Fits 0.5" microphones
- Easy one-handed operation
- Low battery indicator
- CE: conforms to ANSI S1.40 – 1984 and IEC942 – 1988 Class 2

INCLUDED: Battery (installed), user manual



MT-10 Moisture Meter

Measure the moisture content of wallboard, wood, mortar, plaster or other building materials to identify areas of water damage or harmful mold growth. Check wood or concrete flooring before installation, wood during drying or before woodworking.

- Three-color LED indicates moisture severity
- Backlight makes display visible in dim areas

★★★★★
Top Rated

“If you build quality, this is your tool.”

“I watched the Amprobe MT-10 in action when my insurance adjuster came to check out ceiling damage. The rafters without visible water damage showed moisture, the insulation that needed replacing was quickly identifiable and the wall showed the path the water took to the next floor. Wow, this will save waiting to see mold or disintegration long before permanent damage.”

- MT-10 customer reviews

100% of customers who reviewed this product also recommend it.



MT-10 Moisture Meter
Order No. 3503178



TACH10 Tachometer
Order No. 3730008

TACH20 Tachometer
Order No. 3311961

TACH10, TACH20 Combo Tachometers

Measure rotational speed of motors, conveyor belts and other moving or rotating systems with these handheld tachometers. The TACH20, our top-of-the-line tachometer, includes six adapters, a surface speed wheel for contact RPM measurement and an infrared beam for non-contact measurements. The TACH-10 is an economical, universal tachometer that measures rotational and surface speed using both contact and non-contact methods.

- Built-in memory function automatically stores maximum, minimum and average values as well as the last measurement displayed
- Easy to select units and mode functions
- Select RPM using infrared beam or adapter: m/min, m/sec, ft/min, ft/sec, in/min, m, ft and in
- Auto power-off function

	TACH-10	TACH20
Rotation (Non-Contact)	10.0 rpm → 99999 rpm	1 min → 99999 min
Rotation (Contact)	10.0 rpm → 19999 rpm	1 min → 19999 min
Surface Speed (Contact)	1.0000 → 9999.9 m/min 3.0000 → 30000 ft/min 1.0 → 10000 yd/min	0.10 → 1999 m/min 0.40 → 6550 ft/min 4.00 → 78700 in/min 0.10 → 33.30 m/sec 0.10 → 109 ft/sec

INCLUDED: Batteries (installed), user manual, reflective tape, carrying case, adapters



Recommended Accessories

TACH-20-KIT1 Tip, Wheel, Shaft, Funnel and Reflective Tape (TACH20 Replacement part)
Order No. 4210325

TACH-20-ADPT Adaptor For TACH20 (Replacement part)
Order No. 4221983

TH-1 Compact Probe Style Relative Humidity Meter

Slip this little meter in your pocket and be ready for quick temperature and humidity checks.

- Displays relative humidity and temperature simultaneously
- Measure wet bulb and dew point
- Precision capacity relative humidity sensor with twistable protective cap
- Selectable °F and °C
- Stores min/max readings for comparisons
- Data hold

	TH-1
Temperature – Internal Sensor	-44 °F → 122 °F (-20 °C → 50 °C)
Relative Humidity	10 → 95%
Dew Point Temp	•
Wet Bulb Temp	•

INCLUDED: Carrying case, user manual, battery



TH-1 Relative Humidity Meter
Order No. 3311871



CO2-100 Handheld Carbon Dioxide Tester

Get instant feedback on carbon dioxide levels up to 9,999 ppm while you check the air quality compliance of hospitals, schools, offices, or production floors.

- Large, easy-to-read triple LCD display of CO₂, temperature and relative humidity
- Selectable display of dew point and wet bulb
- High performance low-drift sensor designed with NDIR (Non-Dispersive Infrared) waveguide technology
- Backlight for working in dim areas
- TWA (time-weighted average) display for an 8-hour period
- 15 minutes STEL (short-term exposure limit) value
- Audible alarm threshold setting by carbon dioxide level
- Data hold, min/max, average functions
- Long term drift compensation for accurate readings



CO2-100 Carbon Dioxide Tester
Order No. 3475094

CO2-200 Wall-Mounted Carbon Dioxide Meter

Monitor critical, environmentally controlled areas such as laboratories and production facilities with this permanently mounted air quality meter.

- CO₂ measurements up to 9,999 ppm, temperature, relative humidity, dew point and wet bulb
- Audible alarm threshold setting for carbon dioxide levels with output drive relay to control air flow system
- High performance low drift sensor designed with NDIR (Non-Dispersive Infrared) wave guide technology with automatic back ground calibration
- Recording of min, max and average values with recall function
- Data hold

★★★★★
Top Rated

"Easy to use and very accurate"

"Best bang for our buck. Easy to read numbers display with a back up light/illumination. It performed well and is a great addition for any air quality assessment tool kits."

- CO2-100 customer reviews

	CO2-100	CO2-200
CO2	0 → 9999 ppm	0 → 9999 ppm
Temperature Range	14 °F → 140 °F (-10 °C → 60 °C)	14 °F → 140 °F (-10 °C → 60 °C)
RH Range	0% → 95%	0% → 95%
DP (Dew Point Temp.)	-4 °F → 139.8 °F (-20 °C → 59.9 °C)	-4 °F → 139.8 °F (-20 °C → 59.9 °C)
WB (Wet Bulb Temp.)	24.8 °F → 139.8 °F (-5.0 °C → 59.9 °C)	23 °F → 139.8 °F (-5.0 °C → 59.9 °C)
Resolution	1 ppm - CO ₂ concentration, 0.1 °C/°F - Temp, 0.1%RH - Humidity	1 ppm - CO ₂ concentration, 0.1 °C/°F - Temp, 0.1%RH - Humidity

INCLUDED: Batteries (installed), user manual, carrying case, power adapter (CO2-200)



CO2-200 Carbon Dioxide Tester
Order No. 3475100

CM100 Carbon Monoxide Meter

This compact meter measures the presence of carbon monoxide and warns you when it exceeds safe levels.

- Alarm is preset to 25 ppm to warn about possible danger
- Adjustable CO warning levels: 25, 30, 35, 45, 50, 70, 100 and 200 ppm
- Backlight for viewing in dim areas
- Auto power-off to save batteries
- Self-test feature
- Dual digital backlit display

	CM100
Range	0 ppm → 999 ppm
Resolution	1 ppm

INCLUDED: User manual, batteries (installed)



CM100 Carbon Dioxide Meter
Order No. 3311826

For detailed specifications go to amprobe.com

TMA5 Mini Vane Anemometer

This pocket-sized tool gives you an easy way to measure air flow, temperature and humidity in the HVAC systems of residential, commercial or industrial buildings.

- Measures air velocity, temperature and ambient temperature (in °F or °C), humidity, dew point, wet bulb, wind chill
- Simple, two-button operation
- Selectable wind units: mph, ft/m, Knt, m/s, km/h, BF
- Maximum wind speed display
- Data hold
- Auto power-off with disable feature
- Low battery indication
- Ergonomic design with wrist strap
- External temperature probe included



TMA5 Mini Vane Anemometer

Order No. 3503169

Recommended Accessories

See pg. 60-64 for details about accessories.

TPK-60 K-type external temperature probe

Order No. 3503184



	TMA5
Wind Speed Range	0.5 → 44.7 mph, 60 → 3937 ft/m, 0.4 → 38.8 knt, 1.1 → 20.0 m/s, 0.7 → 72.0 km/h, 1 → 8 BF
Air Temperature Range	32 °F → 122 °F (0 °C → 50 °C)
External Temperature Range	-4 °F → 158 °F (-20 °C → 70 °C)
Air RH% Range	5% → 95% RH
Wind Speed Response	Averaging every 2 seconds
Temperature Response Time	60 seconds (typical)
Air RH% Response Time	60 seconds (typical)
Wind-Chill Display	•
Dew Point Temperature	•
Wet Bulb Temperature	•

INCLUDED: Battery (installed), user manual, external temperature probe, ergonomic wrist strap



TMA-20HW and TMA-21HW Hot Wire Anemometers

Hot wire anemometer technology eliminates bearings and rotating parts to make these meters durable and measurements stable and accurate. It's the simple, safe way to monitor indoor air quality and measure air flow and temperature in residential, commercial and industrial air conditioning systems.

- Highly accurate thermometer with 0.1% basic accuracy for precise measurements
- 4 ft. fast response telescopic probe for use in hard to reach places
- Measures air flow volume in CFM, CMM
- Instant, Avg, 2/3 Vmax Flow Measurements
- Velocity m/s, ft/min, knots, km/hr, mph
- Relative humidity and temperature measurement (TMA-21HW only)
- Data hold & Maximum/Minimum with Time stamp
- Data Memory and Real function (99 sets)
- 512KB auto data-logging capacity (TMA-21HW)
- USB interface (TMA-21 only)
- Wet bulb and dew point
- Large backlit LCD display with 5 parameters
- Auto Power ON/OFF setting

	TMA-20HW	TMA-21HW	BEST ACCURACY
Air Flow	0.10 m/s → 30.00 m/s 0.2 km/hr → 110.0 km/hr 10 ft/min → 6000 ft/min 0.10 knots → 59.0 knots 0.12 MPH → 68.00 MPH		± 3% of rdg ±1% FS
Air Flow Volume	0.000 CFM → 999900 CFM 0.000 CMM → 999900 CMM		± 3%
Temperature	-	-4 °F → 140 °F (-20 °C → 60 °C)	± 0.9 °F (± 0.5 °C)
Relative Humidity	-	0.0 → 100 %	± 3%
Data-logging via USB	-	•	-
Wet Bulb/Dew Point	-	•	-

INCLUDED: Batteries (installed), hard carrying case, user manual, USB cable and PC software (TMA-21HW only)



TMA-21HW Hot Wire Anemometer

Order No. 3730239

TMA-20HW Hot Wire Anemometer

Order No. 3730221



TMA40-A Anemometer, Relative Humidity and Temperature

Measure air velocity (FPM) or air volume (CFM), relative humidity and temperature with just one tool. A large digital display with backlight and flexible measurement vane makes measuring easy in difficult areas. Measures up to 99 points and logs up to 2400 measurements.

- Flexible measurement vane for accessing difficult areas
- Measures air velocity (fpm), air volume (cfm), relative humidity, and temperature
- Measure up to 99 points
- Data logging up to 2400 data points
- Optional PC interface for charting or analysis
- Large digital display with backlight

	RANGE	RESOLUTION	ACCURACY
Air Velocity	0.4 to 32 m/s (1.3 to 105 ft/s)	0.1 m/s (0.1 ft/s)	± 3%
Air Volume	0 → 99999 (cfm/cmm)	0.1 CMM - 1 CFM	± 3%
Temperature	-4 °F → 158 °F (-20 °C → 70 °C)	0.1 °F (0.1 °C)	± 0.6 °C (± 1 °F)
Relative Humidity	0 → 100%	0.1%	± 3% @ 77 °F (25 °C)



INCLUDED: Carrying case, battery (installed), user manual, optional PC interface for charting or analysis



TMA40-A Anemometer RH and Temperature
Order No. 3477287

★★★★★
Top Rated
"Great tool."

"The Amprobe TMA40-A is a great tool for air flow measurement. It does dew point, wet bulb, dry bulb, air speed, and air velocity. Great tool for troubleshooting duct problems."

- **TMA40-A** customer reviews

TMA10A Anemometer with Flexible Precision Vane

The essential tool for HVAC technicians, the TMA10A measures air velocity or volume (CFM), plus temperature. Just enter surface area type for accurate airflow measurements.

- Large dual display for viewing airflow or velocity measurement including temperature
- Long flexible cord to access remote vanes
- Continuous moving average for up to 2 hours
- Air velocity average for up to 8 points
- Multi-point air flow (cfm) average
- PC interface for charting or analysis
- Min/max/average reading on a single point
- Data hold
- Auto power-off function

	RANGE	BEST ACCURACY
Air Velocity	0.40 → 25.00 m/s	± 2% of full scale
	125 → 4900 ft/min	± 2% of full scale
Air Flow	0.01 → 99.99 m ³ /sec	0 → 9.999 m
	1 ft → 9999 cfm	0 → 9.999 ft
Air Temperature	32 °F → 122 °F (0 °C to 50 °C)	± 1.5 °F (0.8 °C)



INCLUDED: Carrying case, battery (installed), user manual, optional PC interface for charting or analysis



TMA10A Anemometer Flexible Precision Vane
Order No. 2817785

Recommended Accessories
See pg. 60-64 for details about accessories.

TMA10A USB Download Cable and Software CD



RLD-1 Refrigerant Leak Detector

Troubleshoot air conditioning systems quickly and accurately with the RLD-1. State-of-the-art technology makes it easy to precisely pinpoint a wide variety of halogenated refrigerant leaks.

- Detects R-134a, R-404a, R-407c, R-410a, R-22, Freon and other refrigerants
- Sensitive gas sensor and advanced digital signal processing for high accuracy
- Built-in suction pump for precise sensor response
- Tri-color LED display and audio clearly indicate leaks
- High-Medium-Low (H/M/L) leak sensitivity selector
- Automatic zero and background compensation
- Low battery indication
- Ambient concentration reset

RLD-1 Refrigerant Leak Detector
Order No. 3474968

★★★★★
Top Rated

"Great little detector!"

"I love the fact that the RLD-1 is silent while searching and only makes noise when a leak is found. When it finds a leak it will give you an audible and visual alert. I have been in HVAC for 16 yrs. and I own a few Amprobe products and I have been very pleased with all of them."

- RLD-1 customer reviews

Recommended Accessories

See pg. 60-64 for details about accessories.

RLD-1 SENSOR Replacement Sensor (Replacement part)

Order No. 4091231



	RLD-1
Detectable Gases	R-134a, R-404a, R-407c, R-410a, R-22, Freon
R-22, 134a Sensitivity	H - 3g/year, M - 15g/year, L - 30g/year
R-404a, 407c, 410a Sensitivity	H - 4g/year, M - 20g/year, L - 40g/year
Alarm Method	Buzzer, Tricolor LED bar Indicator
Power Usage	2 C size (3V DC) Alkaline Batteries
Snake Tube Length	15.5" (40 cm)



INCLUDED: Batteries (installed), user manual, carrying case, leak check bottle, AC adapter



GSD600 Gas Leak Detector

Detect dangerous methane or propane leaks that can lead to explosions and gas poisoning. With its five-level LED and audible alarms, the GSD600 helps you assess whether the area is safe or needs to be vented. The frequency of the beeping increases with the concentration of the gas, allowing you to pinpoint the source of the leak in piping or appliances. The display provides an accurate measurement of the presence of gas in the area.

- Detects combustible gases
- Quickly identifies and pinpoints gas leaks for closed piping systems
- Automatic calibration feature level LED alarm: >40, >80, >160, >320, and >640 ppm
- Mute function and LED alerts for quiet areas
- Built-in earphone jack (earphones not included) for loud environments
- Flexible probe to access difficult measurement areas
- Auto power-off

	RANGE
Methane	40 ppm → 640 ppm
Propane	35 ppm → 580 ppm
Sensitivity	35 ppm (propane)



Best Seller

GSD600 Gas Leak Detector
Order No. 3311832

★★★★★
Top Rated

"This thing really works."

"The Amprobe GSD600 found a leak at the furnace shut-off valve, I tightened nut and that was fixed."

- GSD600 customer reviews

100% of customers who reviewed this product also recommend it.



INCLUDED: Battery (installed), carrying case, user manual



ULD-300 Ultrasonic Leak Detector

Quickly locate gas leaks in pressurized air lines, steam lines, and refrigeration systems regardless of gas type (CFC, HFC, nitrogen and other non-combustible gases).

- Locates arcing in an electrical system
- Finds the ends of buried PVC pipes
- Parabola shield reduces background noise
- Access difficult or dangerous areas with extension tube
- Readings converted to visual (LED) and audio signals

INCLUDED: Flexible tubing adapter, tubular extension, carrying case, power parabola, headphone, batteries (installed)



ULD-300 Ultrasonic Leak Detector
Order No. 2731543

TMULD-300 Ultrasonic Leak Detector with Ultrasonic Transmitter

In areas where leaking gases are not sufficiently pressurized, there is no ultrasonic sound to detect. With the ultrasonic transmitter, an area can be "pressurized" with the ultrasonic sound waves, making it easy to detect cracks and leaks.

- Same features as ULD-300
- Transmitter "pressurizes" an area with ultrasonic sound
- Check door or trunk seals for air tightness, or windshields for water tightness

INCLUDED: Flexible tubing adapter, tubular extension, carrying case, power parabola, headphone, batteries (installed), UT-300 transmitter



Recommended Accessories

See pg. 60-64 for details about accessories.



ULD-300-KIT1 Adapter Kit For ULD-300
Order No. 4294491



UT-300 Ultrasonic Transmitter (ULD- 300)
(Replacement part)
Order No. 2734446



TMULD-300 Ultrasonic Leak Detector Kit
Order No. 2731543

★★★★★ Top Rated

"Great product."

"This tool paid for itself many times over. I have found leaks large and small inside walls, on evaporator coils, condensers and water lines. I've loaned it to colleagues who purchased your product immediately after using mine. These tools lead the industry in leak detection through its sensitivity and ability to detect negative or positive pressure."

- **TMULD-300** customer reviews

100% of customers who reviewed this product also recommend it.



Convenient to read>
display with remote
sensor technology

Measures the solar power>
and transmission up to 2000
W/m², 634BTU/(ft²xh)

Adapters, Relays, Solar, Component and Battery Testers

GREEN - Amprobe solar solutions provide you with the tools to knowledgeably install, maintain, and troubleshoot solar systems as well as analyze the energy efficiency of solar panels, water heaters, and windows. Use Amprobe battery testers not only for green energy applications, but testing UPS and battery back-up systems.

Light-Check Adapters

Safe and reliable testing with Amprobe Light Check Adapters

Amprobe's complete set of Light-Check adapters are made to ensure your safety during testing light points. The adapters can be used in conjunction with a wide variety of test equipment that uses test leads terminating in 4 mm safety connectors. They enable a range of tests to be conducted on light fitting terminals eliminating the need to hold test probes in place and ensuring reliable and safe contact.

Features

- Simple, one-handed operation
- Optimal and safe contact to light points
- Low contact resistance for accurate line impedance measurement
- Tactile finger guard safety barrier
- Compact and durable
- 4 mm safety socket
- Maintenance free
- Rated CAT II 300 V

Applications

Light-Check adapters can be used with:

- Installation Testers
- Insulation Testers
- Wire Tracers
- Voltage Measurement and Monitoring Equipment

Light-Check Adapters	
Output	4 mm safety socket
Voltage range	0 to 300 V AC (insulation measurement up to 1000 V)
Nominal current	Up to 2 A continuous/cover peaks while loop /line measurement
Electrical safety	IEC 61010-1, UL61010-1, CAN/CSA C22.2 No. 61010-1-12



ADPTR-B15
Order No. 4965867



ADPTR-B22
Order No. 4965844



ADPTR-E14
Order No. 4965859



ADPTR-E27
Order No. 4965832



ADPTR-KIT1
Light-Check Adapter Kit includes complete set of 5 adapters (E27, B22, E14, B15, GU10) with carrying case.

Order No. 4965826



ADPTR-GU10
Order No. 4965871

ADPTR-SCT Socket-Check Adapter

This Amprobe Socket-Check adapter ensures safe, reliable testing with optimal contact to an outlet. The adapter can be used in conjunction with a wide variety of test equipment that uses test leads terminating in 4 mm safety connectors.

Features

- Ease of use
- Optimal and safe contact to outlets
- Low contact resistance, important for line resistance, loop impedance and earth bond measurements
- Compact and durable
- 4 mm safety socket
- Maintenance free
- Rated CAT II 120 V

Applications

Socket-check adapters can be used with:

- Installation Testers
- Insulation testers
- Portable Appliance Testers
- Wire Tracers
- Voltage Measurement and Monitoring Equipment (PQ)

ADPTR-SCT	
Output	4 mm safety socket
Voltage range	0 to 120 V AC
Nominal current	4 A max.
Electrical safety	IEC 61010-1, UL61010-1, CAN/CSA C22.2 No. 61010-1-12



ADPTR-SCT Socket-Check Adapter

Order No. 4964097





R-115S Remcon Relay Switch
Order No. 2734454



RC-120S Remcon Closet Light Relay
Order No. 3730239

Best Seller

★★★★★
Top Rated

"Perfect for restorations!"

"I've come across several old houses built with DC controlled/switched AC branch circuits who's switching relay's are finally starting to fail after decades of service, so I was quite relieved to find that Remcon Relay Switches are available."

- R-115S customer reviews

100% of customers who reviewed this product also recommend it.



Solar-100 Solar Power Meter
Order No. 3474979

★★★★★
Top Rated

"A great instrument."

"This is an excellent device for quick measurements of irradiance out in the field. I was surprised that it can measure BTUs as well as headlight brightness and window tint.

It can also demonstrate the advantages of tracking and the effects of cloud cover. Great value for the money."

- SOLAR-100 customer reviews

R-115S Remcon Momentary Switch Relay (3-wire)

RC-120S Remcon Closet Light Relay (2-wire)

When you need low-voltage control circuits for safe operation in industrial and process control environments, choose these low-voltage relays with built-in transformers. Each unit operates independently, so you can install one relay and operate it with as many switches as needed or control multiple relays with a single switch.

- Uses light 22 gauge wire, saving the time and expense of pulling Romex or armored cable
- Simplifies wiring – no need to wire back to separate low voltage transformers
- Operates silently so you can install relays at the fixture instead of at a remote location

	R-115S	RC-120S
AC Voltage	105 V → 125 V	
AC Current	Up to 6.5 A (1/4 HP max motor load at 120 V)	
Frequency	60 Hz	
Safe Control Switching, Maximum	10 V DC 10 milliamps	



Solar-100 Solar Power Meter

Optimize the placement of solar systems and analyze window efficiency with the SOLAR-100. Measure solar output and calculate overall energy and efficiency.

- Measures the solar power and transmission up to 2000 W/m², 634BTU/(ft²xh)
- Power mode – measurement of the power per unit area of incident solar radiation
- Transmission mode - calculates the solar power transmission percentage of the material for example how much solar power in % will be transmitted through the window
- Convenient to read display with remote sensor technology
- Selectable measurement units either W/m² or BTU/(ft² x h)
- Data hold
- Max/min functions to identify locations with maximum or minimum power

Applications

- Windows performance – calculation and verification of the heating or heat reduction caused by direct sunlight
- Solar radiation measurements
- Solar power research for location of the solar panels or solar water heater
- Physics and optical laboratories
- Meteorology
- Agriculture

	SOLAR-100
Solar Power	Up to 2000 W/m ² , 634 BTU/(ft ² xh)
Max/Min	•
Data Hold	•

INCLUDED: Battery (included), carrying case, user manual



Amprobe Solar Multifunction Tester coming soon!

CR50A Capacitance Tester

Inspect and verify components for quality control by quickly checking circuits with this full-range capacitance and resistance meter.

- Dual zero adjustments pots to null strays and test leads
- Special "low ohms" range
- "Zero adjust" pots for low ohms and capacitance ranges
- Low battery indication

LCR55A Inductance, Capacitance and Resistance Tester

The ultimate electronic component verifier measures inductance, capacitance, resistance, transistors, diodes and microwave diodes.

- Plug-in test slots and test leads with threaded alligator clips for precision testing
- Data hold and max hold
- "Zero adjust" pot for ohms
- Low battery indication
- Auto power-off

	CR50A	LCR55A
Resistance	20 Ω, 200 Ω, 2 kΩ, 20 kΩ, 200 kΩ, 2 MΩ, 20 MΩ	20 Ω, 200 Ω, 2 kΩ, 20 kΩ, 2 MΩ, 20 MΩ
Capacitance	200 pF, 2000 pF, 2 μF, 20 μF, 200 μF, 2 mF, 20 mF	200 pF, 2000 pF, 2 μF, 20 μF, 200 μF, 2 mF
Inductance	-	200 μH, 2 mH, 200 mH, 200 H
Transistors	-	Hfe, Iceo (NPN, PNP)
Diodes	•	Standard (3 V) & microwave oven (8 V)
Continuity Test	•	•

INCLUDED: User manual, test leads with alligator clips, battery (installed)



★★★★★
Top Rated
"Very reliable."

"We work in the HVAC industry and capacitors are a common issue. The Amprobe LCR55A Capacitance Tester has been a great investment and time saver. A quick check and record has identified weak capacitors and saved us from costly call backs."

- LCR55A customer reviews

BAT-250 Battery Tester

The Amprobe BAT-250 Battery Tester is designed for one-handed, comfortable and reliable battery measurements. The uniquely designed tester offers an ergonomic slider and a v-shaped side cradle to better hold batteries in place during testing. The contoured case shape fits neatly in your hand. Testing your batteries has never been easier.

- Quickly indicates battery status: "good", "low" or "replace"
- Test standard and rechargeable batteries: 9V, AAA, AA, C, D, and 1.5 V button/coin/watch
- Ergonomically designed to contour to your hand for easy operation
- No batteries required to operate
- Large, upright display is easy to read
- V-shaped side cradle holds batteries securely in place during testing for consistently accurate results
- High-quality 9V contacts make tests simple and error-free
- Slider is shaped for one-handed testing

	BAT-250 Battery Tester
I Max at F.S.D (typical)	1.5 V: 375 mA, 9 V: 40 mA
Normal load (typical)	1.5 V: 4 Ω, 9 V: 215 Ω
Dimensions (H x W x D)	4.3 x 2.9 x 1.1 in (110 x 74 x 29 mm)
Battery size	9 V, AAA, AA, C, D and 1.5 V button/coin/watch battery
Weight	Approximately 0.11 lb (50 g)
Certification	CE

Battery Type:	Battery Indicator (typical):		
	REPLACE	LOW	GOOD
AAA, AA, C, D and 1.5 V button/coin/watch battery	< 0.9 V	0.9 V	> 1.0 V
9 V	< 5.3 V	5.3 V	> 6.5 V



CR50A Capacitance Tester
Order No. 3474968



LCR55A Inductance, Capacitance and Resistance Tester
Order No. 3474968



Best Seller

Tests 9V batteries



BAT-250 Battery Tester
Order No. 4589825

BAT-500 Battery Impedance Tester

Here's the quick, accurate way to test back-up batteries and UPS systems without taking batteries off line.

- Comparator function to quickly access battery condition as Pass, Warning or Fail
- Store up to 99 user programmable settings for quick battery diagnostics
- Test battery impedance to calculate its true life
- Works with most batteries: compact storage batteries, alkaline and lead-acid up to 500 Ah
- Resistance measurement up to 40 ohms and voltage up to 40 V
- Simultaneously measure battery resistance and voltage
- Compact and lightweight
- For trending/life cycle analysis download test results to a PC



BAT-500 Battery Impedance Tester
Order No. 3474946

	BAT-500
Maximum Battery Capacity	Up to 500 amp hours
Battery Type	Alkaline, Nickel-Metal Hydride (NiMH), Nickel-Cadmium (NiCd), Lithium-ion (Li-ion) and lead-acid batteries
DC Voltage	4.000 V, 40.00 V
Impedance	40 mΩ, 400 mΩ, 4 Ω, 40 Ω
Data Capture Memory	500 data sets
Data Logging Memory	9600 data sets
PC Download	•

INCLUDED: User manual, software manual, batteries, AC adaptor, RS232C (to USB Bridge) cable, software CD, kelvin clips



★★★★★
Top Rated

"Great for kids who constantly replace AA batteries without knowing if they are good batteries and easy to use."

- **BAT-250 customer reviews**

100% of customers who reviewed this product also recommend it.





LCD Display with auto backlight



..... Detect ground faults on cables and pipes

Accessories

OPTIMIZE - Get the most out of your Amprobe tools with a wide range of carrying cases, probes, current transducers, test leads, software and more. Visit amprobe.com to view the full line of accessories and determine which ones are available for your Amprobe test tools.

Recommended and Replacement Accessories

Some accessories listed are included with the order of a product or kit and can also be ordered separately as a replacement part.



AF-600 A-Frame Find any fault with the AF-600 A-Frame cable ground fault locator, specifically designed for use with the Amprobe UAT-600 Series.

(see pg. 6)

Order No. 4994405



SC-600 Signal Clamp The Signal Clamp accessory provides an efficient and safe method of applying a locate signal to a cable, enabling the Transmitter to induce a signal through the insulation into the wires or pipes. The clamp works on low impedance closed circuits only.

*The SC-600 is included in the UAT-620 Underground Utilities Locator. (see pg. 6)

Order No. 4994479



CT-400 Signal Clamp/400A Current Transducer The CT-400 Signal Clamp accessory* is used to induce a signal into wires without access to bare conductors. For use with the AT-6000 Series Advanced Wire Tracers.

*The CT-400 is included in the AT-6030 Advanced Wire Tracer Kit. (see pg. 9)

Order No. 4868025



SC-7000 The SC-7000 Signal clamp accessory is used to induce a signal into wires without access to bare conductors. For use with the AT-7000 Advanced Wire Tracer system.

*The SC-7000 is included in the AT-7030 Advanced Wire Tracer Kit. (see pg. 10)

Order No. 4313916



SC-3500 Signal Clamp 4" Signal Clamp accessory designed for use with the AT-3500 Professional Underground Cable and Pipe Locator System.

(see pg. 8)

Order No. 3435073



MLS55-3 Pipe Transmitter Accessory designed for use with the AT-3500 Professional Underground Cable and Pipe Locator System.

(see pg. 8)

Order No. 3729989



CT-53 Flex Current Sensor thin flex current sensor with user selectable input ranges of 300 A, 1000 A, or 3000 A is designed for use with the DM-5 Power Quality Analyzer.

*The CT-53 is included with the DM-5. (see pg. 28)

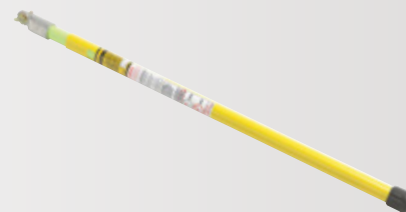
Order No. 4726219



CT-500 Flex Current Sensor thin flex current sensor with user selectable input ranges of 300 A, 1000 A, or 3000 A is designed for use with the DM-5 Power Quality Analyzer.

*The CT-500 is included with the DM-5. (see pg. 28)

Order No. 4726228



TIC-410A Hot Stick Attachment extends the reach of the TIC 300 Pro high voltage detector for checking transmission lines, power distribution equipment, down power lines, fuses, and load break connectors. Extends the voltage limit on the TIC 300 Pro from 1500 AC to 122,000 V AC (122 kV) and adjusts from 33" to 57". Just screw it onto the universal adapter on the TIC 300 Pro high voltage probe — no other tools are required.

(see pg. 35)

Order No. 3467441

Recommended and Replacement Accessories

Some accessories listed are included with the order of a product or kit, and are also available as a replacement part and can be ordered separately.



TL-UAT-600 Test Lead Kit includes a black test lead with detachable black alligator clip, red test lead with permanently attached red alligator clip and ground stake.

*The TL-UAT-600 is included in the UAT-610 and UAT-620 Underground Utilities Locator Kits. (see pg. 6)

Order No. 4994446



DL243D Test Lead Kit 48" silicone lead wires, probe tips, alligator clips, spade lugs, fold-out carrying case.

Order No. 3026853



DL248D Deluxe Test Lead Kit Same as DL243D plus spring loaded crimp tips and red tip length extender.

Order No. 3026866



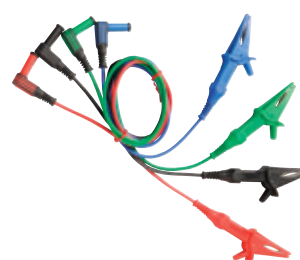
TL35B Test Leads 40" PVC insulated lead with standard tips plus threaded large alligator clips, CE approved alligator clips, 0.6" jaw, shrouded 90° banana plugs, one red and one black leads and clips.

Order No. 3068232



TL1500 Heavy duty test leads CAT IV/1000 V, 1500 V MAX.

Order No. 2696277



MO-100-LEADS Replacement set of test leads for the MO-100 (see pg. 36)

Order No. 4160798



TPK-59 Dual Banana Thermocouple Accessory for multimeters and clamp-ons with temperature input. Measures temperature from -50 °F to 600 °F. Plugs directly to a meter without additional adapters.

Order No. 2733660



UT-300 Ultrasonic Transmitter Replacement part for ULD-300. (see pg. 53)

Order No. 2733660



TPK-60 K-type optional external temperature probe replacement accessory for the TMA5 Mini-Vane Anemometer. (see pg. 50)

Order No. 3503184



RLD-1-SENSOR Replacement Sensor for the RLD-1 Refrigerant Leak Detector. (see pg. 52)

Order No. 4091231



ULD-300-KIT1 Adapter Kit For ULD-300 includes: TEA-1 Flexible tubing adapter, PB-1 power parabola, HP-1 headphone, TE-1 tubular extension (see pg. 53)

Order No. 3503184

Recommended and Replacement Accessories

Some accessories listed are included with the order of a product or kit and can also be ordered separately as a replacement part.



EL52A AC Outlet Line Splitter

Measures load current without splitting line cord. Two measurement points, X1 and X10 for increased sensitivity. Built-in voltage measurement jacks 115 V, 15 A.

Order No. 3027072



CT235A CE



CT237B CE



CT238A CE

Clamp Attachments These current transformer probes measure AC or DC current. They convert high current to a low level millivolt signal for input directly into a test instrument. They can be used with standard DMMs, recorders, digital or analog meters, data loggers/DAS, oscilloscopes, or other test and measurement instruments.

CT235A AC/DC current clamp, 1000 A (50/10 kHz), mV output, 1.2" max conductor

Order No. 3026809

CT237B AC/DC current clamp, 200 A (50/10 kHz), mV output, .75" max conductor

Order No. 3511514

CT238A AC/DC current clamp, 20 A (50/20 kHz) Low current version

Order No. 3026827

Use with HD110C and HD160C Heavy-duty Multimeters (see pg. 25)



CC-5 Carrying Case with Magnet

Designed for use with the DM-5 Power Quality Analyzer. (see pg. 28)

Order No. 4726243



CC-300 PRO Carrying Case Designed for use with the TIC 300 PRO High Voltage Detector.

*The CC-300 PRO is included with the TIC 300 PRO and is available as a replacement part. (see pg. 35)

Order No. 3467429



HS-1 Hanging Strap The HS-1 Hanging Strap is a three-way hanger for the AT-7000-T Transmitter or any Amprobe digital multimeter. It allows convenient hanging of the unit, placement on a belt or as a stand.

Order No. 4594135

Carrying Case Directory

	CC-ACDC	DC205C	CC-MEG	SV-U	VC221B	VC3A	VC30A	CC-DM-III	CC-300 PRO	CC-6000	CC-7000	CC-UAT -600
30XR-A					•							
33XR-A					•							
34XR-A					•							
37XR-A					•							
38XR-A					•							
5XP-A					•							
15XP-B					•							
35XP-A					•							
AC40C							•					
AC50A							•					
AC68C	•											
AC75B	•											
ACD-50NAV	•											
ACD-51NAV	•											
ACDC-52NAV	•											
ACD-53NAV	•											
ACDC-54NAV	•											
ACD-20SW	•											
ACD-21SW	•											
ACD-22SW	•											
ACD-23SW	•											
ACD-10 PLUS				•								
ACD-10 TRMS-PLUS				•								
ACD-14 PLUS				•								
ACD-14 TRMS-PLUS				•								
ACD-15 TRMS-PRO	•											
ACD-16 TRMS-PRO	•											
ACD-41PQ	•											
ACD-45PQ				•								
ACD-6 PRO	•											
ACDC-100	•											
ACDC-100 TRMS	•											
ACD-3300 IND	•											
ACDC-3400 IND	•											
AD40B							•					
AM-140-A					•							
AM-160-A					•							
AM-220					•							
AM-240					•							
AM-250					•							
AM-270					•							
AM-500							•					
AM-510					•							
AM-520					•							
AM-530					•							
AM-560					•							
AM-570					•							
AM8C					•							
AMB-45			•									
AT-6000										•		
AT-7020/7030											•	
CR50A							•					
DGC-1000A	•											
DM III Multitest								•				
DM73C				•								
DM78C							•					
DM7C					•							
DM9C					•							
GP-2A			•									
HD110C		•			•							
HD160C		•			•							
INSP-3					•							
LCR55A					•							
LH41A				•								
PM51A						•						
PM55A						•						
RS-1007	•											
RS-3 PRO	•											
TIC 300 PRO									•			
UAT-600												•



CC-ACDC
Soft Pouch Zippered Carrying Case
11.5 x 4.5 x 2.8"
(292 x 114 x 70 mm)



DC205C
Deluxe Heavy Duty Carrying Case
9.6 x 4.7 x 4.3"
(244 x 119 x 109 mm)



CC-MEG
Soft Carrying Case
10 x 8.5 x 3.25"
(254 x 216 x 89 mm)



SV-U
Soft Pouch Zippered Carrying Case
8.5 x 3.0 x 2.5"
(216 x 76 x 64 mm)



VC221B
Padded Vinyl Carrying Case
8.5 x 4.5 x 2.5"
(216 x 114 x 64 mm)



VC3A
Rugged zippered Carrying Case
4.5 x 2.2 x .4"
(114 x 56 x 10mm)



VC30A
Vinyl Carrying Case
7.5 x 3.4 x 1.5"
(191 x 86 x 38 mm)



CC-DM-III
Deluxe Heavy Duty Carrying Case
18.3 x 15.0 x 7.3"
(465 x 381 x 184 mm)



CC-7000
Custom Hard Carrying Case
16 x 13 x 7"
(40.6 x 33 x 17.8 cm)

Product Fuse Directory

MODEL	PART NUMBER	FUSE TYPE
RS-1007	FP500	0.5A/1000V, 6.3X32mm
RS-3 PRO	FP500	0.5A/1000V, 6.3X32mm
AM-250	FP650	630mA/500V, 6X32mm
	FA-12.5A/500V	12.5A/500V, 6X32mm
AM-270	FP160	10A/600V, 10X38mm
	FUSE-1A	1A/600V, 10X38mm
AM-500	FA-0.5A/700V	0.5A/700V, 6.3X32mm
	FP400	10A/600V, 6.3X25 mm
AM-510	FP500	0.5A/1000V, 6.3X32mm
	FP400	10A/600V, 6.3X25 mm
AM-520	FP500	0.5A/1000V, 6.3X32mm
	FP410	11A/1000V, 10X38mm
AM-530	FP500	0.5A/1000V, 6.3X32mm
	FP410	11A/1000V, 10X38mm
AM-560	FP500	0.5A/1000V, 6.3X32mm
	FP410	11A/1000V, 10X38mm
AM-570	FP500	0.5A/1000V, 6.3X32mm
	FP410	11A/1000V, 10X38mm
AM-140-A	FP160	10A/600V, 10X38mm
	FUSE-1A	1A/600V, 10X38mm
AM-160-A	FP412	0.44A/1000V, 10X38mm
	FP410	11A/1000V, 10X38mm
AM-220	5X20-250.5	0.5A/250V, 5X20mm
	6X32-250V10A	10A/250V, 6X32mm
AM-240	5X20-250.5	0.5A/250V, 5X20mm
	6X32-250V10A	10A/250V, 6X32mm
30XR-A	FP160	10A/600V, 10X38mm
	FP375	0.25A/700V, 6.3X32mm
33XR-A	FP100	10A/1000V, 10X3 8mm
	FP300	0.315A/1000V, 6.3X32mm
34XR-A	FP100	10A/1000V, 10X38mm
	FP300	0.315A/1000V, 6.3X32mm
37XR-A	FP100	10A/1000V, 10X38mm
	FP500	0.5A/1000V, 6.3X32mm
38XR-A	FP100	10A/1000V, 10X38mm
	FP500	0.5A/1000V, 6.3X32mm
5XP-A	FP300	0.315A/1000V, 6.3X32mm
15XP-B	FP200	2A/1000V, 6.3X32mm
35XP-A	FP200	2A/1000V, 6.3X32mm
HD110C	FP700	2A/1500V, 8X65mm
HD160C	FP700	2A/1500V, 8X65mm
DM7C	FP900	200mA/700V, 6.3X32mm
DM9C	FP540	10A/600V, 6.3X32 mm
PRM-4	FP900	200mA/700V, 6.3X32mm
AMB-45	FA-0.5A/700V	0.5A/700V, 6.3X32mm
S2600	380.25-6X32	0.25A/380V, 6X32mm
T-100,T-300 (CT-100, 326B)	3AG-312.250	0.25A/250V, 6.3X32mm
T2200 (AT-200X)	2502-6X32	2A/250V, 6X32mm
X1000 (AT1000)	380.25-6X32	0.25A/380V, 6X32mm
CR50A	FP125	0.1A/250V, 5X20mm
LCR55A	FP125	0.1A/250V, 5X20mm
AU92	FP520	0.5V/500V, 6.3X32 mm
	FP540	10A/600V, 6.3X32 mm

Software and Cables

Transfer measurement data to your computer with these kits.

Download Suite Software

Free software package compatible with most Amprobe instruments that have download capabilities. Enjoy the benefits of this powerful software package for a wide selection of Amprobe megohmmeters, ground resistance testers, multimeters, and power quality recorders.

- Install software once and use it with all supported Amprobe products
- All instruments share the same file format. You can open files recorded by you, other people, or the Amprobe instruments right on your PC.
- Download Suite automatically checks your version for upgrades and keeps your version current.
- Windows 95/ 98/ NT/ ME/ 2k/ XP/ 7/ 8/ 8.1/ 10 (32-bit and 64-bit) compatible

USB-KIT2

- Download software with connection cable for Amprobe clamp meters

USB-KIT3

- Download software with connection cable for Amprobe multimeters

RS-USB, USB to RS-232 Adapter

- Converts the USB port of a PC to RS-232
- Supports Windows 95 (OSR2X), 98, 2000, ME, XP, Vista, Mac 8.6 and higher
- Works with Amprobe instruments with download capabilities
- Works with many other products with USB ports, including cameras, Palm Pilot, card readers, mouse, security systems, etc.
- Frees up the serial port for other uses

TM-SWA, USB Cable and Software

- Allows for real-time data downloads from TMA10A and TMD90A
- Records two channels simultaneously



USB-KIT2 Download for Amprobe clamp meters
Order No. 3804929

TM-SWA USB Download Cable and Software CD
Order No. 3027085



USB-KIT3 Download for Precision Multimeters
Order No. 3804918

For complete details on Amprobe software and to download the latest versions, please visit www.amprobe.com/softwaredownloads.html

Complete Amprobe Product Index

Model	Order No.	Description
15XP-B	3534088	COMPACT DMM W/NCV AND LOGIC TEST
2502-6X32	2732136	2 AMP FUSE
30XR-A	2727774	PROF DMM W NON-CONTACT VOLT TESTER
33XR-A	2727788	PROF DMM W TEMP AND CAPACITANCE
34XR-A	2727795	PROF DMM TRUE RMS W TEMPERATURE & BACKLIGHT
35XP-A	2727849	COMPACT DMM WITH TEMP, FREQ, CAPACITANCE
37XR-A	2727808	PROF DMM TRUE RMS W COMPONENT LOGIC TEST
380.25-6X32	2732149	FUSE FOR S2300
38SW-A	2727813	RS232 SOFTWARE/CABLE
38XR-A	2727824	PROF DMM TRUE RMS W OPTICAL PC INTERFACE
3AG-312	2732151	FUSE, 0.1 AMP FAST BLOW
3AG-312.250	2732160	FUSE, 1/4A 250V NORMAL BLOW, FOR T-100 & T-300
3AG-313.062	2732185	FUSE FOR CT
5X20-250.5	2732212	FUSE AM-68
5XP-A	2727851	COMPACT DMM WITH NON-CONTACT VOLTAGE
6.3X25-2-12	2732235	FUSE, SPECIAL 600 VOLT 2 AMP
600CKA	2732247	VOLTAGE TRANSFORMER FOR CT-326B AND CT-100
660.25-6X32	2732258	FUSE, 1/4 AMP
8AG361	2734552	FUSE 1AMP FAST BLOW
8AG-361.5	2732299	FUSE
A2202	2732321	CLAMP-ON TRANSMITTER ACCESSORY
AC50A	3033017	COMPACT CLAMP METER FOR LEAKAGE CURRENT
AC68C	2727919	600 A AC/DC CLAMP-ON DMM,TRMS
AC75B	2727885	600A AC CLAMP DMM W/TEMPERATURE,CAP,LOW DC AMP
ACD-10 PLUS	3037808	DIGITAL CLAMP ON METER, CAP, FREQ
ACD-10 TRMS-PLUS	3037813	DIGITAL CLAMP ON METER, TRUE RMS, CAP, FREQ
ACD-14 PLUS	3086905	DUAL DISPLAY DIGITAL CLAMP-ON MULTIMETER
ACD-14 TRMS-PLUS	3086910	DUAL DISPLAY DIGITAL CLAMP-ON MULTIMETER, TRMS
ACD-14-PRO	4718977	DUAL DISPLAY 600 A TRMS CLAMP MULTIMETER
ACD-15 TRMS-PRO	2730690	2000A DIGITAL CLAMP-ON MULTIMETER, TRMS
ACD-16 TRMS-PRO	2730713	1000A DATA-LOGGING CLAMP-ON MULTIMETER TRMS
ACD-20SW	3472723	400A SWIVEL CLAMP
ACD-21SW	3472738	400A SWIVEL CLAMP W/TEMP AND CAPACITANCE
ACD-22SW	3804934	TRMS 400A SWIVEL CLAMP
ACD-23SW	3804941	TRMS 400A SWIVEL CLAMP W/TEMP AND CAPACITY
ACD-3300 IND	3434877	AC 1000A INDUSTRIAL CLAMP
ACD-41PQ	2730760	1000A CLAMP-ON POWER QUALITY METER W/THD-F
ACD-45PQ	3730013	600A POWER QUALITY CLAMP
ACD-50NAV	3729945	600A AC NAVIGATOR CLAMP
ACD-51NAV	3729950	600A AC TRMS NAVIGATOR CLAMP
ACD-53NAV	3729977	1000A AC TRMS NAVIGATOR CLAMP
ACD-6 PRO	2730785	DIGITAL CLAMP-ON METER
ACDC-100	2740452	AC/DC CLAMP-ON
ACDC-100 TRMS	2740465	AC/DC CLAMP-ON TRMS VERSION
ACDC-3400 IND	3434889	ACDC 1000A INDUSTRIAL CLAMP
ACDC-52NAV	3729961	600A AC/DC TRMS NAVIGATOR CLAMP
ACDC-54NAV	3729989	1000A AC/DC TRMS NAVIGATOR CLAMP
ADPTR-B15	4965867	LIGHT-CHECK ADAPTER
ADPTR-B22	4965844	LIGHT-CHECK ADAPTER
ADPTR-E14	4965859	LIGHT-CHECK ADAPTER
ADPTR-E27	4965832	LIGHT-CHECK ADAPTER
ADPTR-GU10	4965871	LIGHT-CHECK ADAPTER
ADPTR-KIT1	4965826	LIGHT-CHECK ADAPTER KIT W/ CARRYING CASE
ADPTR-SCT	4964097	SOCKET-CHECK ADAPTER
AF-600	4994405	A-FRAME FAULT LOCATOR, UAT-600 SERIES
ALC-110	4930876	LEAKAGE CURRENT CLAMP
AM-140-A	3730024	PRECISION DMM W/ TRMS & PC CONNECTION
AM-160-A	3730036	PRECISION DMM W/ TRMS & PC CONNECTION
AM-250	3524986	PROFESSIONAL ELECTRICAL MULTIMETER
AM-270	3524999	INDUSTRIAL MULTIMETER WITH BAR-GRAPH DISPLAY
AM-420	4306513	DIGITAL MULTIMETER
AM-500	4018624	DIY-PRO DIGITAL MULTIMETER
AM-510	4018636	RESIDENTIAL DIGITAL MULTIMETER
AM-520	4018649	HVAC DIGITAL MULTIMETER
AM-530	4018651	ELECTRICAL CONTACTOR DIGITAL MULTIMETER WITH TRUE-RMS
AM-560	4210333	COMMERCIAL HVAC DIGITAL MULTIMETER
AM-570	4210340	INDUSTRIAL DIGITAL MULTIMETER WITH TRUE-RMS
AMB-110	3730335	10,000V INSULATION RESISTANCE TESTER
AMB-25	2730991	DIG MEGOHMMETER, INSULATION RESISTANCE TSTR
AMB-45	2731024	DIG MEGOHMMETER, INSULATION RESISTANCE TSTR
AMB-45-CABLE	4251767	USB TO 3.5MM MALE CONNECTOR COMMUNICATION CABLE FOR AMB-45
AMB-50	3730288	5000V INSULATION RESISTANCE TESTER
AMB-50-KIT1	4091293	TEST LEAD SET (BLK, GRN, RED) FOR AMB-50
AMB-55	3730320	5000V ADVANCED INSULATION RESISTANCE TESTER
AMB-KIT1	4091316	TEST LEAD SET FOR INSULATION RESISTANCE TESTERS
AMB-KIT2	4227515	10 KV SHIELDED LEAD WITH TIP FOR AMB-110 AMB-110
AMP-210	4560537	600A AC TRMS CLAMP MULTIMETER
AMP-220	4560543	600A ACDC TRMS CLAMP MULTIMETER
AMP-25	4588254	300A AC/DC TRMS MINI-CLAMP
AMP-310	4560555	600A AC TRMS HVAC CLAMP MULTIMETER W/ MOTOR TESTING
AMP-320	4560562	600A ACDC TRMS CLAMP MULTIMETER W/ MOTOR TESTING
AMP-330	4560570	1000A ACDC TRMS CLAMP MULTIMETER W/ MOTOR TESTING
AT-1000	2731097	ADVANCED WIRE TRACER
AT-2004-A	4416090	ADVANCED WIRE TRACER, W/HARDCASE/TRANSMITTER/BP/RECHARGER/CONVERTER
AT-2005-A	4416104	ADVANCED WIRE TRACER, IND MULTIPURP W/BATT BSTR
AT-3500	3435058	UNDERGROUND WIRE TRACER
AT-6010	5044625	ADVANCED WIRE TRACER W/RECEIVER,TRANSMITTER, SOFT CARRYING CASE
AT-6020	4867981	ADVANCED WIRE TRACER W/RECEIVER,TRANSMITTER,HARD CARRYING CASE
AT-6030	4867996	ADVANCED WIRE TRACER W/RECEIVER,TRANSMITTER,CLAMP,RB,HARD CARRYING CASE
AT-7000-R	4313887	RECEIVER,AT-7000 WIRE TRACER
AT-7000-T	4313893	TRANSMITTER WITH LCD,AT-7000 WIRE TRACER
AT-7020	4313868	ADVANCED WIRE TRACER W/RECEIVER,TRANSMITTER,HARD CARRYING CASE
AT-7030	4313854	ADVANCED WIRE TRACER W/RECEIVER,TRANSMITTER,CLAMP,RB,HARD CARRYING CASE
B2024	2732515	BATTERY PACK
B2025	2732526	110V CONVERTER
BAT-200	3473003	BATTERY TESTER
BAT-250	4589825	BATTERY TESTER
BAT-500	3474946	BATTERY IMPEDANCE TESTER
BC-1250G	4377939	BARCODE SCANNER 1250G BLACK INCL USB CABLE

**Complete
Amprobe
Product Index**

Model	Order No.	Description
BR-7000C	4544583	AT-7000 TRANSMITTER LI-ION BATTERY CHARGER
BR-7000-T	4467296	BATTERY,RECHARGEABLE, LI-ION, 7.2V, 2.2 AH, AT-7000
BT-120	3472789	BREAKER FINDER
BT-250	2731177	HIGH VOLTAGE BREAKER TRACER
C2006	3378287	CABLE, OPTICAL SERIAL TO USB TYPE A, C2006
C2901	2732604	110V PIGTAIL CORDSET
C2902	2732619	ALLIGATOR CLIP CORDSET, 2PCS
CC-300PRO	3467429	CASE FOR TIC 300 PRO,10.84X4.20X2.40 IN, 01E-888
CC-5	4726243	CARRYING CASE WITH MAGNET
CC-7000	4313925	CASE,CARRYING, FOAM INSERT,AT-7000
CC-ACDC	2732643	CASE FOR ACDC3000/A1000
CC-MEG CASE	3459521	SOFT CASE, 10 X 8.5 X 3.25, 01E-885
CM100	3311826	CARBON MONOXIDE METER W/ADJUSTABLE CO LEVELS
CO2-100	3475094	CO2 METER
CO2-200	3475100	CO2 MOUNTABLE METER
CR50A	3026965	CAPACITANCE/RESISTANCE METER
CT-100	2731189	CURRENT TRACER KIT
CT235A	3026809	AC/DC CLAMP-1000A
CT237B	3511514	AC/DC CLAMP ATTACHMENT-200A
CT-326-C	4416119	CURRENT TRACER
CT-400	4868025	SIGNAL CLAMP/400A CURRENT TRANSDUCER
CT-500	4726228	1000A FLEXIBLE NEUTRAL CURRENT TRANSDUCER
CT-53	4726219	3000A FLEXIBLE 3-SENSOR CURRENT TRANSDUCER
DC205C	3026830	DELUXE HARD SHELL CASE
DGC-1000A	2731217	CLAMP-ON GROUND RESISTANCE TESTER
DL243D	3026853	BASIC TEST LEAD KIT
DL248D	3026866	DELUXE TEST LEAD KIT
DM-5	4724171	POWER QUALITY ANALYZER
DM73C	2727739	PEN PROBE STYLE DMM
DM78C	3156830	AUTO-RANGING POCKET DMM WITH CASE
DM-CT-100	2732730	CURRENT TRANSDUCER, 100A
DM-CT-HTA	2732794	1000A CLAMP-ON CURRENT TRANSDUCER
ECB50A	3016966	CIRCUIT BREAKER LOCATOR AND AC LINE TRACER
ELS2A	3027072	AC OUTLET LINE SPLITTER,X1 AND X10 RANGES
EP-1001	2732869	EARPHONE FOR CT-326B
EPS-700	4160685	EXTERNAL POWER SUPPLY FOR THE IR-750 US 110V
ERT2	4160715	EARTH RESISTANCE TEST LEADS KIT
FA-0.5A/700V	2732878	FUSE,SIBA,70 125 40,,5A/700V
FA-12.5A/500V	2740441	FUSE 12.5A/500V IR 20KA FOR AMP TERMINAL
FLASH-175	3542862	FLASHLIGHT
FP100	1990707	REPLACEMENT FUSE PACK,PACK OF2,10A/1000V CERAMIC FUSES FOR 33XR,34XR,37XR,38XR
FP125	1561550	FUSE, 0.1A @ 250V FAST BLOW 4 PER
FP160	1990718	REPLACEMENT FUSE PACK,PACK OF 2,10A/600V CERAMIC FUSE FOR 30XR
FP200	2095180	REPL FUSE PK,PK OF 2,2A/1000V FUSE F/15XP, 35XP
FP300	1990688	FUSE PACK OF 4,0.315A/1000V FOR 33XR,34XR
FP375	1561610	SPARE FUSE .25A/600V, 4 PER
FP400	1561631	FUSE, 10A @ 600V CERAMIC FAST BLOW (QTY 4 PER PKG)
FP410	3368658	FUSE, 11A/1000V
FP412	3368664	FUSE, FA.44A/1000V
FP425	1561646	20A/600V FUSE, (PKG OF 2)
FP500	1990695	REPLACEMENT FUSE PACK,PACK OF 4, 0.5A/1000V CERAMIC FUSES FOR 37XR,38XR
FP520	3157013	FUSE PACK, 500MA/500V, 2 PER PACK
FP540	3157024	FUSE PACK, 10A/500V, 2 PER PACK
FP600	1565777	FUSE 600V 15A (2 PACK)
FP700	2637713	FUSE PACK OF 2, 2A/1500V CERAMIC FOR HD110C, HD160C
FP900	2278800	FUSE PACK, 200MA/700V ,2 PER
GP-2A	4129187	EARTH GROUND TESTER
GSD600	3311832	GAS LEAK DETECTOR FOR METHANE AND PROPANE
HD110C	2670779	HEAVY DUTY DMM, IP67, 1500V DC
HD160C	2670787	HEAVY DUTY TRMS DMM, IP67, 1500V DC, TEMP
H-PMA	3068175	SILICONE HOLSTER FOR PM51A,PM53A AND PM55A METERS
HS-1	4594135	MAGNETIC HANGER
H-XPA	3068182	XP SERIES MAGNE-GRIP HOLSTER,CLIP,MAGNET & STRAP
INSP-3	3503207	WIRING INSPECTOR
IR-450	4227490	PEN TYPE IR
IR608A	3015690	IR THERMOMETER, PISTOL GRIP, LASER POINTER
IR-708	4689984	8:1 IR THERMOMETER
IR-710	4109553	10 TO 1 IR THERMOMETER
IR-712	4109566	12 TO 1 IR THERMOMETER
IR-720	4109575	20 TO 1 IR THERMOMETER
IR-730	4109582	30 TO 1 IR THERMOMETER
IR-750	4109594	50 TO 1 IR THERMOMETER
IRC-110	4909782	INFRARED CAMERA
IRC-120	4989013	INFRARED CAMERA WITH DATA STORAGE
KLK15	2732993	600V/15A FUSE
LAN-1	3052401	LAN CABLE TESTER, LED DISPLAY
LCR55A	3026976	LCR METER WITH TRANSISTOR TEST
LH41A	3030898	AC/DC CLAMP 4/40A 1MA RESOLUTION
LM-100	3052348	LIGHT METER MANUAL RANGING
LM-120	3052353	LIGHT METER AUTO RANGING
LM-200LED	3730217	LED LIGHT METER
LT-10	4222120	LAMP TESTER
LT-10-ANT	4357839	FLUORESCENT & SODIUM LAMP ANTENNA SET W/CARRY CASE FOR LT-10
MAN30	3475009	30 PSI MANOMETER
MLS55-3	3435099	PIPE TRANSMITTER FOR AT-3500
MO-100	3474954	MILLIOHMETER BATTERY POWERED
MO-100-LEADS	4160798	SET OF TEST LEADS FOR THE MO-100
MT-10	3503178	MOISTURE METER
MT1-LEADS	2734565	TEST LEADS SET (COMPLETE SET)
MT5-LEADS	2733041	ISO-TEST TEST-LEAD KIT FOR AMB-5KV-D
MTL-45	2733119	AMB-45 TEST LEADS
MTL-6	2733162	TEST LEADS AM-6A
MTL-90B	2733170	SET OF TEST LEADS WITH ALLIGATOR CLIPS
NCV-1020	4918049	NON-CONTACT VOLTAGE PROBE 50 TO 1000V
NCV-1030	4918051	NON-CONTACT VOLTAGE PROBE DUAL RANGE 12 TO 1000V W/FLASHLIGHT
NCV-1030	4918051	NON-CONTACT VOLTAGE PROBE 12 TO 1000V W/ FLASHLIGHT
NCV-1040	4918060	NON-CONTACT VOLTAGE PROBE 12 TO 1000V W/MAGNETIC SENSOR + FLASHLIGHT
NCV-1040	4918060	NON-CONTACT VOLTAGE PROBE 12 TO 1000V W/ FLASHLIGHT + MAGNETIC SOLENOID TESTING
P-100	2733222	PROBECT-100

Complete Amprobe Product Index

Model	Order No.	Description
P-26	2733231	CURRENT TRACER PROBE
PC-326	2733254	POWER CORD
PC-5	4726237	POWER ADAPTER
PK-110	4394419	ELECTRICAL TESTING KIT
PM51A	2727700	POCKET DMM W FREQ AND CAPACITANCE
PM55A	2727721	AUTOMATIC PRECISION POCKET DMM
PRM-4	3239635	PHASE & MOTOR ROTATION TESTER
PRM-6	4375950	PHASE SEQUENCE AND MOTOR ROTATION TESTER
PT26	2733325	PIGTAIL CONNECTOR
PY-1A	3503229	VOLTAGE TESTER
R-1155	2734454	REMCON RELAY SWITCH
R2000	2733340	RECEIVER FOR WIRE TRACERS
RC-120S	2731504	SOLID STATE RELAY 115V CLOSET-LIGHT TYPE 2 WIRE
RLD-1	3474968	REFRIGERANT LEAK DETECTOR
RLD1-SENSOR	4091231	REPLACEMENT SENSOR FOR RLD-1
RS-1007 PRO	3467476	CLAMP METER ANALOG CAT IV 600V-1000A, 2 INCH JAW
RS-3 PRO	3467465	CLAMP METER ANALOG CAT IV 600V-300A, 1 INCH JAW
RS-USB	2733461	RS-232 TO USB CONVERTER CABLE
RTD-10	3730060	RTD THERMOMETER
RTD-10W	3730072	RTD THERMOMETER WIRELESS
RTL25A	3068194	TEST LEADS STANDARD
S2600-A	4425277	LOAD SIGNAL GENERATOR (9-300V)
SC-3500	3435073	SIGNAL CLAMP FOR AT-3500
SC-600	4994479	SIGNAL CLAMP, UAT-600 SERIES
SC-7000	4313916	CLAMP ASSY,AT-7000 WIRE TRACER
SM-10	3052366	SOUND METER
SM-20A	3477333	SOUND METER DATALOGGING W/ PC SOFTWARE AND USB
SM-CAL1	3052382	SOUND METER CALIBRATOR
SOLAR-100	3474979	SOLAR POWER METER
ST-101B	4160800	SOCKET TESTER
ST-102B	4160817	GFCI SOCKET TESTER
SV-U	2733511	CASE, UNIVERSAL
T-100	2733527	CURRENT TRACER TRANSMITTER
T2200	2733530	CURRENT TRACER TRANSMITTER
T-300	2733548	CURRENT TRACER TRANSMITTER
TA-1A	2766054	TEMPERATURE ADAPTER WITH SHROUDS, AMPROBE
TACH-10	3730008	CONTACT/NON-CONTACT TACHOMETER
TACH-10-KIT1	4210316	REFLECTIVE TAPE AND TIPS FOR THE TACH-10
TACH20	3311961	TACHOMETER, COMBO, CONTACT/NON-CONTACT
TACH-20-ADPT	4221983	ADAPTOR
TACH-20-KIT1	4210325	SET OF WHEELS FOR TACH20
TH-1	3311871	RH/TEMPERATURE PROBE STYLE METER
TH-3	3027060	HUMIDITY TEMPERATURE METER,DUAL DISPLAY
THWD-10	3730049	RH METER
THWD-10W	3730051	RH METER WITH WIRELESS
THWD-3	3033042	DIG SLING PSYCHROMETER W/DEW & WET BULB READ
THWD-5	3311803	RH, TEMPERATURE, DP, WB W/FLEX PROBE METER
TIC 300 PRO	3467441	AC VOLTAGE DETECTOR 30 TO 122000V
TIC 410A	3107749	HOT STICK
TL1500	2696277	TEST LEADS,ALLIGATOR CLIPS,HD DMMS, CAT IV 1000V
TL-300	4588279	TEST LEADS SET W/ALLIGATOR CLIPS (RED,BLACK,YELLOW),CASE & THERMOCOUPLE
TL35B	3068232	TEST LEAD WITH ALLIGATOR CLIPS - CE
TL36A	3034444	TEST LEAD SET WITH ALLIGATOR CLIP,CAT III 1000VOLT
TL-UAT-600	4994446	TEST LEADS KIT, UAT-600 SERIES
TL-7000	4467308	AT-7000 TEST LEAD SET W/ALLIGATOR CLIPS BLK/RED, POWER CORD
TL-7000-25M	4634011	25 METERS LONG TEST LEAD
TL73C	3068244	GROUND LEAD W/ALLIGATOR CLIP,DM73C
TL-DM-5	4726255	TEST LEAD SET WITH ALLIGATOR CLIPS
TL-PRM-4	3237875	PRM-4 REPLACEMENT TEST LEAD SET
TL-PRM-6	4692870	TEST LEADS SET FOR PRM-6
TMA10A	2817785	ANEMOMETER THERMOMETER, FLEXIBLE VANE
TMA-20HW	3730221	HOT WIRE ANEMOMETER
TMA-21HW	3730239	HOT WIRE ANEMOMETER
TMA40-A	3477287	ANEMOMETER, TEMPERATURE, RH TESTER W/USB
TMA5	3503169	MINI-VANE ANEMOMETER
TMD-10	3052394	DUAL CHANNEL THERMOMETER, TYPE K, J
TMD-50	3730150	THERMOCOUPLE THERMOMETER K TYPE
TMD-52	3730106	THERMOCOUPLE THERMOMETER K/J/T/E TYPE
TMD-53	3730085	THERMOCOUPLE THERMOMETER K/J
TMD-55	3730114	MULTILOGGER THERMOMETER
TMD-55W	3730123	MULTILOGGER THERMOMETER W/ WIRELESS DOWNLOAD
TMD-56	3730138	MULTILOGGER THERMOMETER W/ USB DOWNLOAD
TMD90A	2817797	DUAL INPUT DIGITAL THERMOMETER, -200 TO 1760 DEGREE C
TM-SWA	3027085	RS232 SOFTWARE, CABLE FOR TMD90A,TMA10A
TMULD-300	2731543	ULTRASONIC LEAK DETECTOR KIT
TP73C	3068259	PROBE TIP,DM73C
TPK-59	2733660	THERMOCOUPLE, DUAL BANANA
TPK-60	3503184	OPTIONAL EXTERNAL TEMPERATURE PROBE
TPK-62	4160703	TEMPERATURE ADAPTER + 2 THERMOCOUPLES FOR AM-500 SERIES
TPP1-C1	2826634	POCKET TEMPERATURE PROBE, IMMERSION, CENTIGRADE
TPP2-C1	2826652	POCKET TEMPERATURE PROBE, SURFACE, CENTIGRADE
TR100-A	3477293	TEMPERATURE DATA LOGGER W/DIG DISPLAY AND USB
TR200-A	3477302	TEMPERATURE/RH DATA LOGGER W/DIG DISPLAY AND USB
TR300	3311844	TEMPERATURE/RH DATA LOGGER, DP, DUAL DISPLAY
UAT-610	4994380	UNDERGROUND UTILITY LOCATOR KIT
UAT-620	4994398	UNDERGROUND UTILITY LOCATOR KIT W/ CLAMP
ULD-300	2734431	ULTRASONIC LEAK DETECTOR
ULD-300-KIT1	4294491	ADAPTER KIT FOR ULD-300:TEA-1,PB-1,HP-1,TE-1
USB-KIT2	3804929	DOWNLOAD MODULE FOR AMPROBE CLAMPS
USB-KIT3	3804918	DOWNLOAD MODULE FOR AMPROBE PRECISION MULTIMETERS
USB-W1	3804809	USB WIRELESS MODULE FOR HVAC INSTRUMENTS
UT-300	2734446	ULTRASONIC TRANSMITTER
VC221B	3068271	VINYL CARRYING CASE, FULL SIZE METERS
VC30A	3068280	VINYL CARRYING CASE, MEDIUM SIZE METERS
VC3A	3099130	ZIPPED CARRYING CASE FOR PM POCKET METERS
VP-1000	4700987	NON CONTACT VOLT PROBE
VP-1000SB	4160821	NON CONTACT VOLT PROBE W/SHAKER/BUZZER
VP-440	2734332	NON-CONTACT AC VOLT PROBE, 110 TO 600V
X1000	2734100	TRANSMITTER

AMPROBE®

Complete Product Catalog

2019-2020 Vol. #1



Amprobe®
Division of Fluke Corp.
6920 Seaway Blvd.
M/S 143F
Everett, WA 98203 USA
amprobe.com
P 877-AMPROBE (267-7623)

© 2019 - 2020 Fluke Corporation.
All rights reserved.
Printed in the U.S.A.
2765603-O

Specifications subject to change
without notice.

**Tested by
Fluke Labs**

Safety certified by  
More than 500 products worldwide
Ordered and supported through Fluke